



SEISEN
TECHNOLOGY



CATÁLOGO
ANTENAS

| | Model | Frequency Range -MHz | Gain-dBi | Page Number |
|----------------------------|----------------|-------------------------|-----------|-------------|
| 800-900MHz Antennas | | | | |
| Fiberglass Omni Antennas | HXOA-800A118 | 820 ~ 896 | 8 | 1 |
| | HXOA-800B | 824 ~ 896 | 10 | 1 |
| | HXOA-900A11 | 806 ~ 960 | 10.5 | 2 |
| | HXOA-900A118 | 885 ~ 960 | 8 | 2 |
| | HXOA-900AT3 | 885 ~ 960 | 3 | 3 |
| | HXOA-900AT6 | 902 ~ 928 | 6 | 3 |
| | HXOA-900B | 806 ~ 960 | 10 | 4 |
| | HXOA-900B5 | 806 ~ 960 | 10 | 4 |
| | HXOA-900C | 806 ~ 960 | 8 | 4 |
| | HXOA-900DB | 806 ~ 960 | 10.5 | 5 |
| | HXOA-900K | 890 ~ 960 | 7.2 | 5 |
| | HXOA-900T5A | 890 ~ 960 | 5 | 6 |
| | HXOA-900W9A | 885 ~ 960 | 9 | 6 |
| | HXOA-900R6 | 806 ~ 960 | 6 | 7 |
| | HXOA-900R6T6 | 806 ~ 960 | 6 | 7 |
| | HXOA-0809W6A | 824 ~ 960 | 6 | 8 |
| | HXOA-0809T6A | 800 ~ 960 | 6 | 8 |
| | Panel Antennas | HXWM-900BKBR | 900 ~ 960 | 7.5 |
| HXWM-900BKBRA | | 902 ~ 928 | 9 | 9 |
| HXWM-900BKBW | | 806 ~ 960 | 9 | 10 |
| HXWM-900BKBY | | 870 ~ 960 | 7 | 10 |
| HXWM-900BKC | | 902 ~ 928 | 7 | 11 |
| HXWM-900BKDA | | 824 ~ 960 | 5 | 11 |
| HXWM-900BKM | | 902 ~ 928 | 7 | 12 |
| HXWM-915BKBH | | 902 ~ 928 | 9 | 12 |
| HXWM-915BKBY | | 902 ~ 928 | 7 | 13 |
| HXWM-915BKR | | 902 ~ 928 | 9 | 13 |
| HXWM-915BQ8HW | | 860 ~ 928 | 8 | 14 |
| HXWM-915EA9 | | 902 ~ 928 | 9 | 14 |
| HXWM-915BQ12C | | 902 ~ 928 | 12 | 15 |
| HXWM-915BQ12CH | | 902 ~ 928 | 12 | 15 |
| HXWM-915BQ12CHC | | 902 ~ 928 | 12 | 15 |
| HXWM-BQ12CR | | 865 ~ 869/902 ~ 928 | 12 | 15 |
| HXWM-915BQ12CRC | | 902 ~ 928 | 12 | 15 |

| | Model | Frequency Range -MHz | Gain-dBi | Page Number |
|------------------------------|------------------|-------------------------|----------|-------------|
| 1700-2000MHz Antennas | | | | |
| Fiberglass Omni Antennas | HXOA-1800A | 1710 ~ 1880 | 10 | 16 |
| | HXOA-1800A10 | 1710 ~ 1880 | 10 | 16 |
| | HXOA-1800AT | 1785 ~ 1805 | 9 | 17 |
| | HXOA-1800B | 1710 ~ 1880 | 8 | 17 |
| | HXOA-1800T6 | 1800 ~ 1900 | 6 | 18 |
| | HXOA-1800W7 | 1710 ~ 1880 | 7 | 18 |
| | HXOA-1820T8 | 1805 ~ 2025 | 8 | 19 |
| | HXOA-1900AT6 | 1850 ~ 1990 | 6 | 19 |
| | HXOA-1900B15 | 1850 ~ 1990 | 5 | 20 |
| | HXOA-1900B18 | 1850 ~ 1990 | 8 | 20 |
| | HXOA-1900C10 | 1890 ~ 1920 | 7.2 | 21 |
| | HXOA-1900C | 1890 ~ 1920 | 7.2 | 21 |
| | HXOA-1900E5 | 1890 ~ 1920 | 9 | 21 |
| | HXOA-1900T6 | 1900 ~ 2000 | 6 | 22 |
| | HXOA-1900T8C | 1890 ~ 1920 | 8 | 22 |
| | HXOA-2000A11 | 1920 ~ 2170 | 11 | 23 |
| | HXOA-2000T8A | 2000 ~ 2170 | 8 | 23 |
| | HXOA-1719T8 | 1710 ~ 1920 | 8 | 24 |
| | HXOA-1720T5A | 1700 ~ 2000 | 5 | 24 |
| | HXOA-1922A3 | 1900 ~ 2200 | 3 | 25 |
| HXOA-2100T8 | 2100 ~ 2200 | 8 | 25 | |
| HXOA-2100AT6 | 2100 ~ 2200 | 6 | 26 | |
| HXOA-2100AT9 | 2050 ~ 2150 | 9 | 26 | |
| Panel Antennas | HXWM-1800BKB | 1700 ~ 1920 | 13 | 27 |
| | HXWM-1800BKT12×2 | 1780 ~ 1850 | 12 | 27 |
| | HXWM-1800L12 | 1710 ~ 1880 | 12 | 28 |
| | HXWM-1900BKC | 1700 ~ 2500 | 8 | 28 |
| | HXWM-1900BKD | 1700 ~ 2500 | 8 | 29 |
| | HXWM-1900BKF | 1850 ~ 1990 | 9 | 29 |
| | HXWM-1900BKR | 1850 ~ 1990 | 14 | 30 |
| | HXWM-1900BFA | 1850 ~ 1990 | 10 | 30 |
| | HXWM-2100BFA | 1710 ~ 2170 | 8 | 31 |
| HXWM-2100BKBD | 1920 ~ 2170 | 8 | 31 | |

| | Model | Frequency Range -MHz | Gain-dBi | Page Number |
|------------------------------------|------------------|---|---------------|-------------|
| 800-2500MHz Antennas | | | | |
| Fiberglass Omni Antennas | HXOA-0819T3 | 806 ~ 890/1850 ~ 1990 | 2.5/3 | 32 |
| | HXOA-0822A5 | 824 ~ 960/1710 ~ 1990/1900 ~ 2200 | 5 | 32 |
| | HXOA-800/1900A5 | 824 ~ 960/1710 ~ 1990 | 5 | 33 |
| | HXOA-900/1800W6 | 824 ~ 960/1710 ~ 1990 | 6 | 33 |
| | HXOA-900/1800W6A | 824 ~ 960/1710 ~ 1990 | 3 | 34 |
| | HXOA-900/1800WT6 | 824 ~ 960/1710 ~ 1990 | 6 | 34 |
| Panel Antennas | HXWM-0828BKMA | 800 ~ 960/1710 ~ 2500 | 8/10 | 35 |
| | HXWM-0825BKML | 800 ~ 960/1710 ~ 2500 | 7/10 | 35 |
| | HXWM-0825BKMX | 800 ~ 960/1710 ~ 2500 | 7/10 | 36 |
| | HXWM-0825BKMLY | 800 ~ 960/1710 ~ 2500 | 7/10 | 36 |
| | HXWM-0825BKM2YB | 800 ~ 960/1710 ~ 2500 | 7/10 | 37 |
| | HXWM-0825BKMLR2 | 800 ~ 960/1710 ~ 2500 | 7/10 | 37 |
| Directional Ceiling Mount Antennas | HXCM-0825FSA | 800 ~ 960/1710 ~ 2500 | 5/7 | 38 |
| | HXCM-0825XDA | 806 ~ 960/1710 ~ 2500 | 5/7 | 38 |
| | HXCM-0825XTQ | 800 ~ 960/1710 ~ 2500 | 5.5 | 39 |
| | HXCM-0825XTQ1A | 824 ~ 960/1710 ~ 2500 | 5.5 | 39 |
| | HXCM-0825XTZ | 824 ~ 960/1710 ~ 2500 | 3/5 | 40 |
| | HXCM-0825XYB | 824 ~ 960/1710 ~ 2500 | 3/5 | 40 |
| Omni Ceiling Mount Antennas | HXCM-0825FSA | 800 ~ 960/1710 ~ 2500 | 3/3.5 | 41 |
| | HXCM-0825XTSL | 800 ~ 960/1710 ~ 2500 | 3 | 41 |
| | HXCM-0825XTY | 820 ~ 960/1700 ~ 2500 | 3 | 42 |
| | HXCM-0825XTY1 | 800 ~ 960/1700 ~ 2500 | 3 | 42 |
| | HXCM-0825XDB | 824 ~ 960/1710 ~ 2500 | 3/5 | 43 |
| | HXCM-0825XTL | 806 ~ 960/1710 ~ 2500 | 2/4 | 43 |
| | HXCM-0825XTG3 | 806 ~ 960/1710 ~ 2500 | 3 | 44 |
| | HXCM-0825XTP | 806 ~ 960/1710 ~ 2500 | 3 | 44 |
| | HXCM-0825XYB | 824 ~ 960/1710 ~ 2500 | 3/5 | 45 |
| | HXCM-0825XYD | 800 ~ 960/1710 ~ 2500 | 3/5 | 45 |
| | HXCM-0860XTYGA | 806 ~ 960/1425 ~ 1700/1700 ~ 3100/3100 ~ 3450/5150 ~ 6000 | 2.5/3/3/3/3.5 | 46 |
| | HXCM-0860YG | 806 ~ 960/1425 ~ 1700/1700 ~ 3100/3100 ~ 3450/5150 ~ 6000 | 2.5/3/3/3/3.5 | 46 |
| Broadband Directional Antennas | HXDF-0825DSA | 800 ~ 960/1710 ~ 2500 | 8.2/9.5 | 47 |
| | HXDF-0825DSAL | 800 ~ 960/1710 ~ 2500 | 8.2/9.5 | 47 |
| | HXDF-0825DSB | 800 ~ 960/1710 ~ 2500 | 5.5/6.5 | 48 |
| | HXDF-0825DSFL | 800 ~ 960/1710 ~ 2500 | 9.5±1/10±1 | 48 |

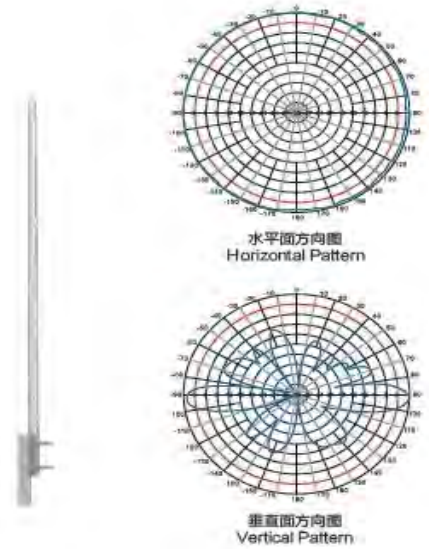
| Model | | Frequency Range -MHz | Gain-dBi | Page Number |
|-----------------------------|---------------|---------------------------------|-------------|-------------|
| 800-2500MHz Antennas | | | | |
| Directional Antennas | HXDF-0727BKML | 698 ~ 960/1700 ~ 2700 | 7/10 | 49 |
| | HXDF-0727DSAL | 700 ~ 800/800 ~ 960/1710 ~ 2700 | 7.9/8.2/9.5 | 49 |
| | HXDF-0727DSL | 790 ~ 960/1710 ~ 2700 | 6/7 | 50 |
| | HXDF-0727XDA | 698 ~ 960/1710 ~ 2700 | 5/7 | 50 |
| Omni Antennas | HXOA-0727FSA | 698 ~ 896/1700 ~ 2700 | 3/3.5 | 51 |
| | HXOA-0727XDA | 698 ~ 960/1710 ~ 2700 | 2/5 | 51 |

800-900MHz Antennas

Fiberglass Omni Antennas

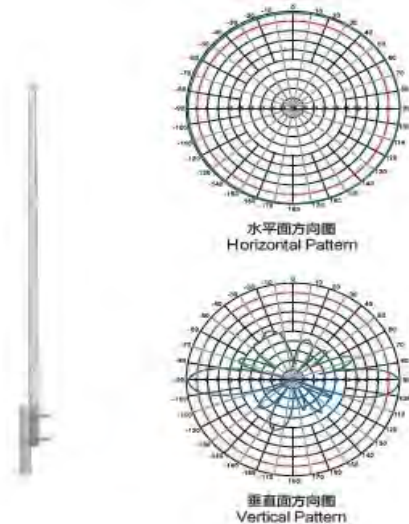
Specifications

| | |
|------------------------|--------------|
| Model | HXOA-800A118 |
| Frequency Range-MHz | 820~896 |
| Bandwidth-MHz | 76 |
| Gain-dBi | 8 |
| Horizontal Beamwidth-° | 360 |
| vertical beamwidth-° | 17 |
| VSWR | ≤1.5 |
| Nominal Impedance-Ω | 50 |
| Polarization | Vertical |
| Max.Power-W | 100 |
| Connector | NF |
| Dimension-m | 2 |
| Weight-Kg | 3.1 |
| Wind Velocity-m/s | 60 |
| Mast Diameter-mm | φ40-50 |



Specifications

| | |
|------------------------|---------------------------|
| Model | HXOA-800B |
| Frequency Range-MHz | 824~896 |
| Bandwidth-MHz | 72 |
| Gain-dBi | 10 |
| Horizontal Beamwidth-° | 360 |
| vertical beamwidth-° | 10.5 |
| VSWR | ≤1.5 |
| Nominal Impedance-Ω | 50 |
| Polarization | N Female or customization |
| Max.Power-W | 100 |
| Connector | N Female |
| Dimension-m | 2.6 |
| Weight-Kg | 2.5 |
| Wind Velocity-m/s | 60 |
| Mast Diameter-mm | φ40-50 |



800-900MHz Antennas

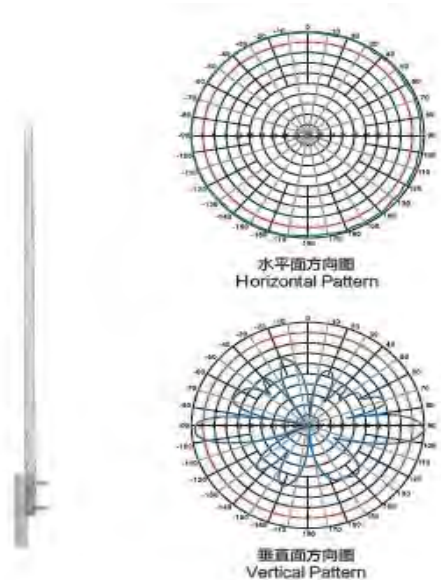
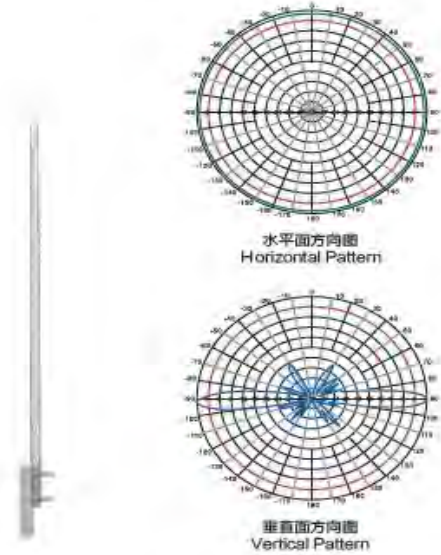
Fiberglass Omni Antennas

Specifications

| | |
|------------------------|---------------------------|
| Model | HXOA-900A11 |
| Frequency Range-MHz | 806~960 |
| Bandwidth-MHz | 70 |
| Gain-dBi | 10.5 |
| Horizontal Beamwidth-° | 360 |
| vertical beamwidth-° | 10.2 |
| VSWR | ≤1.5 |
| Nominal Impedance-Ω | 50 |
| Polarization | Vertical |
| Max.Power-W | 100 |
| Connector | N Female or customization |
| Dimension-m | 3 |
| Weight-Kg | 3 |
| Wind Velocity-m/s | 60 |
| Mast Diameter-mm | φ40-50 |

Specifications

| | |
|------------------------|--------------|
| Model | HXOA-900A118 |
| Frequency Range-MHz | 885~960 |
| Bandwidth-MHz | 75 |
| Gain-dBi | 8 |
| Horizontal Beamwidth-° | 360 |
| vertical beamwidth-° | 17 |
| VSWR | ≤1.5 |
| Nominal Impedance-Ω | 50 |
| Polarization | Vertical |
| Max.Power-W | 100 |
| Connector | N Female |
| Dimension-m | 2 |
| Weight-Kg | 3 |
| Wind Velocity-m/s | 60 |
| Mast Diameter-mm | φ40-50 |



800-900MHz Antennas

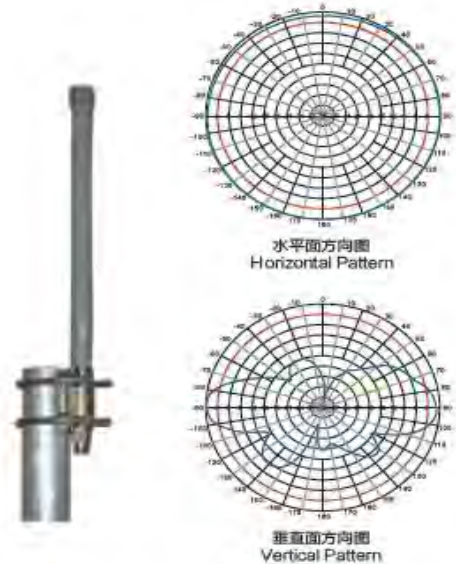
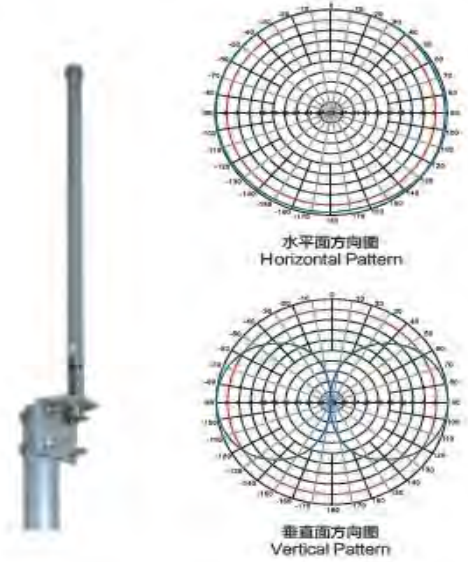
Fiberglass Omni Antennas

Specifications

| | |
|------------------------|-------------|
| Model | HXOA-900AT3 |
| Frequency Range-MHz | 885~960 |
| Bandwidth-MHz | 75 |
| Gain-dBi | 3 |
| Horizontal Beamwidth-° | 360 |
| vertical beamwidth-° | 55 |
| VSWR | ≤1.5 |
| Nominal Impedance-Ω | 50 |
| Polarization | Vertical |
| Max.Power-W | 100 |
| Connector | N Female |
| Dimension-m | 30 |
| Weight-Kg | 0.25 |
| Wind Velocity-m/s | 60 |
| Mast Diameter-mm | φ40-50 |

Specifications

| | |
|------------------------|---------------------------|
| Model | HXOA-900AT6 |
| Frequency Range-MHz | 902~928 |
| Bandwidth-MHz | 26 |
| Gain-dBi | 6 |
| Horizontal Beamwidth-° | 360 |
| vertical beamwidth-° | 28 |
| VSWR | ≤1.5 |
| Nominal Impedance-Ω | 50 |
| Polarization | Vertical |
| Max.Power-W | 100 |
| Connector | N Female or customization |
| Dimension-mm | φ20×720 |
| Weight-Kg | 0.35 |
| Wind Velocity-m/s | 60 |
| Mast Diameter-mm | φ30-50 |

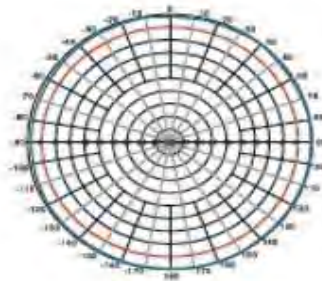


800-900MHz Antennas

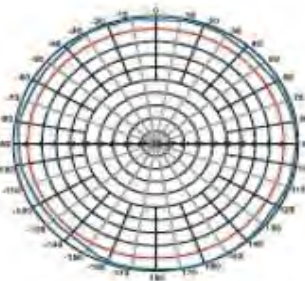
Fiberglass Omni Antennas

Specifications

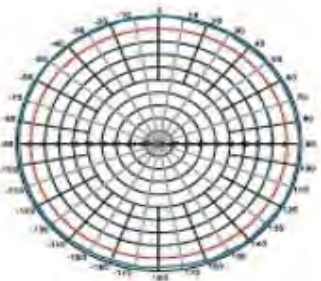
| Model | HXOA-900B | HXOA-900B-5 | HXOA-900C |
|------------------------|---------------------------|---------------------------|---------------------------|
| Frequency Range-MHz | 806~960 | 806~960 | 806~960 |
| Bandwidth-MHz | 70 | 70 | 70 |
| Gain-dBi | 10 | 10 | 10 |
| Horizontal Beamwidth-° | 360 | 360 | 360 |
| vertical beamwidth-° | 10.5 | 10.5 | 10.5 |
| VSWR | ≤1.5 | ≤1.5 | ≤1.5 |
| Nominal Impedance-Ω | 50 | 50 | 50 |
| Polarization | Vertical | Vertical | Vertical |
| Max.Power-W | 100 | 100 | 100 |
| Connector | N Female or customization | N Female or customization | N Female or customization |
| Dimension-m | 2.6 | 2.5 | 1.8 |
| Weight-Kg | 2.5 | 2.5 | 2 |
| Wind Velocity-m/s | 60 | 60 | 60 |
| Mast Diameter-mm | φ40-50 | φ40-50 | φ40-50 |



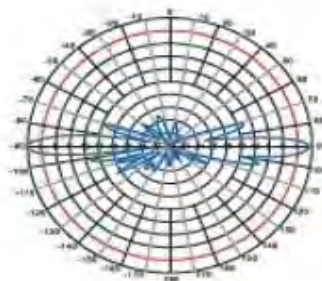
水平面方向圖
Horizontal Pattern



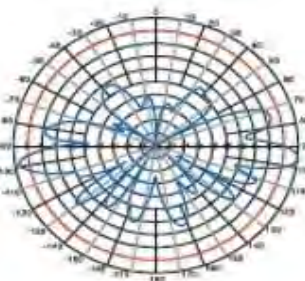
水平面方向圖
Horizontal Pattern



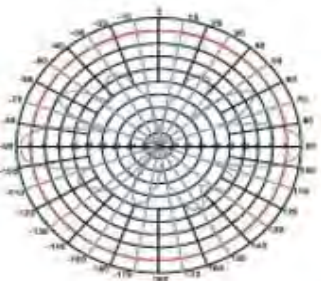
水平面方向圖
Horizontal Pattern



垂直面方向圖
Vertical Pattern



垂直面方向圖
Vertical Pattern



垂直面方向圖
Vertical Pattern

800-900MHz Antennas

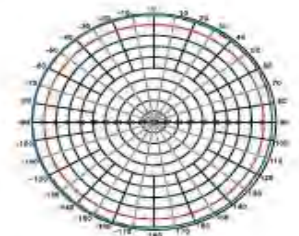
Fiberglass Omni Antennas

Specifications

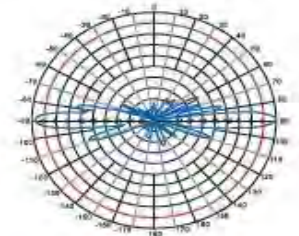
| | |
|------------------------|---------------------------|
| Model | HXOA-900DB |
| Frequency Range-MHz | 806~960 |
| Bandwidth-MHz | 70 |
| Gain-dBi | 10.5 |
| Horizontal Beamwidth-° | 360 |
| vertical beamwidth-° | 10.2 |
| VSWR | ≤1.5 |
| Nominal Impedance-Ω | 50 |
| Polarization | Vertical |
| Max.Power-W | 100 |
| Connector | N Female or customization |
| Dimension-m | 3.18 |
| Weight-Kg | 5.6 |
| Wind Velocity-m/s | 60 |
| Mast Diameter-mm | φ40-50 |

Specifications

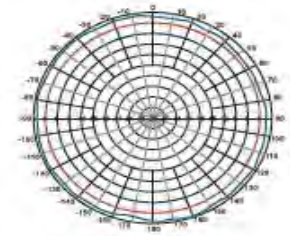
| | |
|------------------------|-----------|
| Model | HXOA-900K |
| Frequency Range-MHz | 890~960 |
| Bandwidth-MHz | 70 |
| Gain-dBi | 7.2 |
| Horizontal Beamwidth-° | 360 |
| vertical beamwidth-° | 20 |
| VSWR | ≤1.5 |
| Nominal Impedance-Ω | 50 |
| Polarization | Vertical |
| Max.Power-W | 100 |
| Connector | N Female |
| Dimension-mm | φ33×1000 |
| Weight-Kg | 1.42 |
| Wind Velocity-m/s | 60 |
| Mast Diameter-mm | φ40-50 |



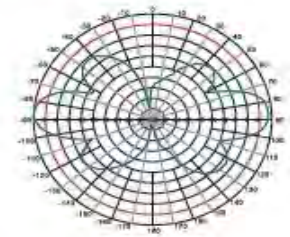
水平面方向图
Horizontal Pattern



垂直面方向图
Vertical Pattern



水平面方向图
Horizontal Pattern



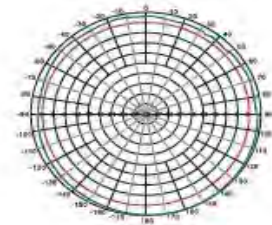
垂直面方向图
Vertical Pattern

800-900MHz Antennas

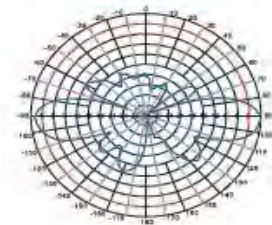
Fiberglass Omni Antennas

Specifications

| | |
|------------------------|-------------|
| Model | HXOA-900T5A |
| Frequency Range-MHz | 890~960 |
| Bandwidth-MHz | 70 |
| Gain-dBi | 5 |
| Horizontal Beamwidth-° | 360 |
| vertical beamwidth-° | 30 |
| VSWR | ≤1.5 |
| Nominal Impedance-Ω | 50 |
| Polarization | Vertical |
| Max.Power-W | 100 |
| Connector | N Female |
| Dimension-m | 0.54 |
| Weight-Kg | 0.3 |
| Wind Velocity-m/s | 60 |
| Mast Diameter-mm | φ40-50 |



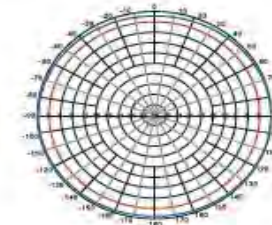
水平面方向图
Horizontal Pattern



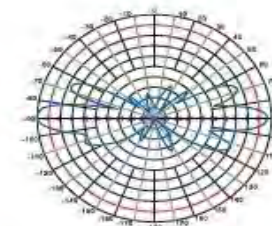
垂直面方向图
Vertical Pattern

Specifications

| | |
|------------------------|-------------|
| Model | HXOA-900W9A |
| Frequency Range-MHz | 885~960 |
| Bandwidth-MHz | 75 |
| Gain-dBi | 9 |
| Horizontal Beamwidth-° | 360 |
| vertical beamwidth-° | 13 |
| VSWR | ≤1.5 |
| Nominal Impedance-Ω | 50 |
| Polarization | Vertical |
| Max.Power-W | 100 |
| Connector | N Female |
| Dimension-m | 1.65 |
| Weight-Kg | 1.2 |
| Wind Velocity-m/s | 60 |
| Mast Diameter-mm | φ40-50 |



水平面方向图
Horizontal Pattern



垂直面方向图
Vertical Pattern

800-900MHz Antennas

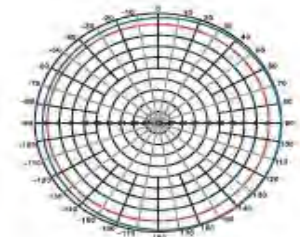
Fiberglass Omni Antennas

Specifications

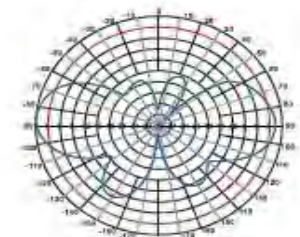
| | |
|------------------------|---------------------------|
| Model | HXOA-900R6 |
| Frequency Range-MHz | 806~960 |
| Bandwidth-MHz | 154 |
| Gain-dBi | 6 |
| Horizontal Beamwidth-° | 360 |
| vertical beamwidth-° | 30 |
| VSWR | ≤1.5 |
| Nominal Impedance-Ω | 50 |
| Polarization | Vertical |
| Max.Power-W | 250 |
| Connector | N Female or customization |
| Dimension-mm | φ52*800 |
| Weight-Kg | 1.5 |
| Wind Velocity-m/s | 60 |

Specifications

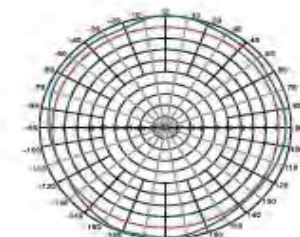
| | |
|------------------------|---------------------------|
| Model | HXOA-900R6T6 |
| Frequency Range-MHz | 806~960 |
| Bandwidth-MHz | 154 |
| Gain-dBi | 6 |
| Horizontal Beamwidth-° | 360 |
| vertical beamwidth-° | 25 |
| VSWR | ≤1.5 |
| Nominal Impedance-Ω | 50 |
| Polarization | Vertical |
| Max.Power-W | 250 |
| Connector | N Female or customization |
| Dimension-mm | φ52*755 |
| Weight-Kg | 1.4 |
| Wind Velocity-m/s | 60 |



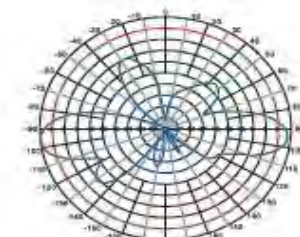
水平面方向图
Horizontal Pattern



垂直面方向图
Vertical Pattern



水平面方向图
Horizontal Pattern



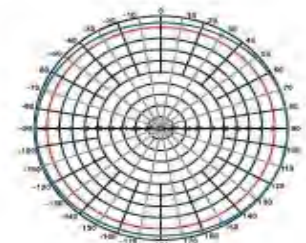
垂直面方向图
Vertical Pattern

800-900MHz Antennas

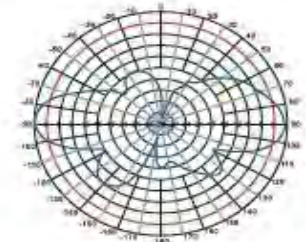
Fiberglass Omni Antennas

Specifications

| | |
|------------------------|--------------|
| Model | HXOA-0809W6A |
| Frequency Range-MHz | 824~960 |
| Bandwidth-MHz | 136 |
| Gain-dBi | 6 |
| Horizontal Beamwidth-° | 360 |
| vertical beamwidth-° | 30 |
| VSWR | ≤1.5 |
| Nominal Impedance-Ω | 50 |
| Polarization | Vertical |
| Max.Power-W | 100 |
| Connector | N Female |
| Dimension-cm | φ3.6×56 |
| Weight-Kg | 1.1 |
| Wind Velocity-m/s | 60 |
| Mast Diameter-mm | φ35-50 |



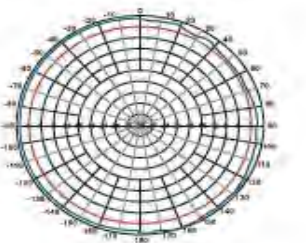
水平面方向图
Horizontal Pattern



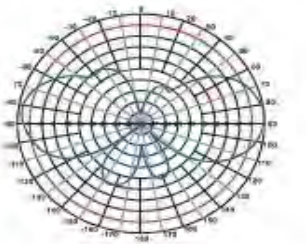
垂直面方向图
Vertical Pattern

Specifications

| | |
|------------------------|--------------|
| Model | HXOA-0809T6A |
| Frequency Range-MHz | 800~960 |
| Bandwidth-MHz | 160 |
| Gain-dBi | 6 |
| Horizontal Beamwidth-° | 360 |
| vertical beamwidth-° | 30 |
| VSWR | ≤1.8 |
| Nominal Impedance-Ω | 50 |
| Polarization | Vertical |
| Max.Power-W | 100 |
| Connector | N Female |
| Dimension-cm | 61 |
| Weight-Kg | 1.25 |
| Wind Velocity-m/s | 60 |



水平面方向图
Horizontal Pattern



垂直面方向图
Vertical Pattern

800-900MHz Antennas Panel Antennas

Specifications

| | |
|------------------------|---------------------------|
| Model | HXWM-900BKBR |
| Frequency Range-MHz | 900~960 |
| Bandwidth-MHz | 60 |
| Gain-dBi | 7.5 |
| Horizontal Beamwidth-° | 70 |
| vertical beamwidth-° | 70 |
| VSWR | ≤1.5 |
| Nominal Impedance-Ω | 50 |
| Polarization | RHCP |
| Max.Power-W | 50 |
| Connector | N Female or customization |
| Dimension-mm | 250×220×60 |
| Weight-Kg | 1 |
| Mounting way | Wall Mounting |



Specifications

| | |
|------------------------|---------------------------|
| Model | HXWM-900BKBRA |
| Frequency Range-MHz | 902~928 |
| Bandwidth-MHz | 26 |
| Gain-dBi | 9 |
| Horizontal Beamwidth-° | 70 |
| vertical beamwidth-° | 70 |
| VSWR | ≤1.3 |
| Nominal Impedance-Ω | 50 |
| Polarization | RHCP |
| Max.Power-W | 100 |
| Connector | N Female or customization |
| Dimension-mm | 240×230×50mm |
| Weight-Kg | 1.1 |
| Mounting way | Wall Mounting |

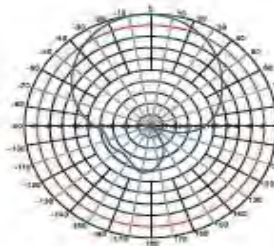


800-900MHz Antennas

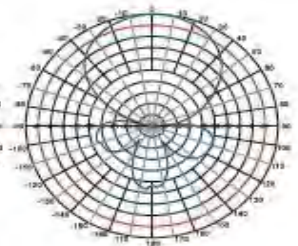
Panel Antennas

Specifications

| | |
|------------------------|---------------|
| Model | HXWM-900BKBW |
| Frequency Range-MHz | 806~960 |
| Bandwidth-MHz | 154 |
| Gain-dBi | 9 |
| Horizontal Beamwidth-° | 65 |
| vertical beamwidth-° | 60 |
| F/B Ratio-dB | ≥10 |
| VSWR | ≤1.5 |
| Nominal Impedance-Ω | 50 |
| Polarization | Vertical |
| Max.Power-W | 50 |
| Connector | N Female |
| Dimension-mm | 250×220×60 |
| Weight-Kg | 1 |
| Mounting way | Wall Mounting |



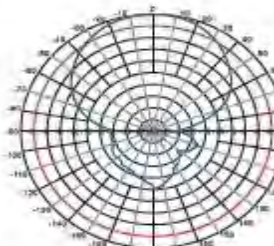
水平面方向图
Horizontal Pattern



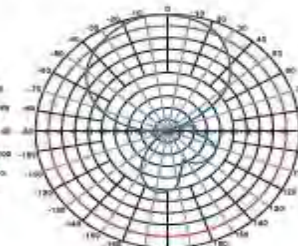
垂直面方向图
Vertical Pattern

Specifications

| | |
|------------------------|------------------------|
| Model | HXWM-900BKBY |
| Frequency Range-MHz | 870~960 |
| Bandwidth-MHz | 90 |
| Gain-dBi | 7 |
| Horizontal Beamwidth-° | 70 |
| vertical beamwidth-° | 58 |
| F/B Ratio-dB | ≥18 |
| VSWR | ≤1.5 |
| Nominal Impedance-Ω | 50 |
| Polarization | Vertical or Horizontal |
| Max.Power-W | 50 |
| Connector | N Female |
| Dimension-mm | 240×230×50 |
| Weight-Kg | 0.35 |
| Mast Diameter-mm | φ40~50 |



水平面方向图
Horizontal Pattern

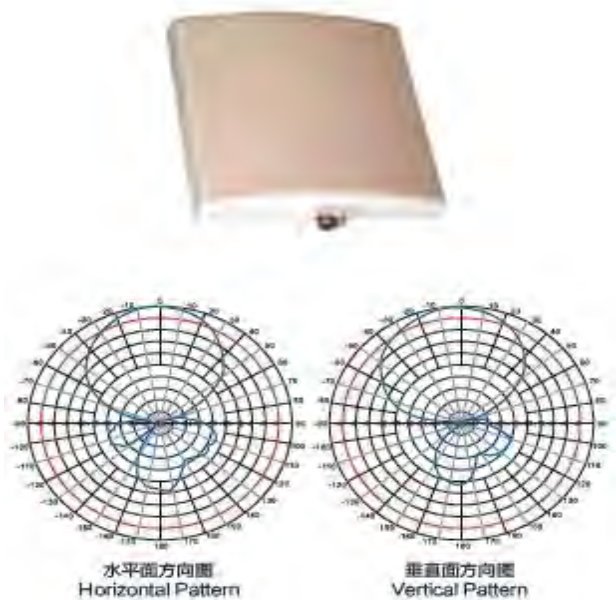


垂直面方向图
Vertical Pattern

800-900MHz Antennas Panel Antennas

Specifications

| | |
|------------------------|---------------|
| Model | HXWM-900BKC |
| Frequency Range-MHz | 902~928 |
| Bandwidth-MHz | 26 |
| Gain-dBi | 7 |
| Horizontal Beamwidth-° | 70 |
| vertical beamwidth-° | 58 |
| F/B Ratio-dB | ≥18 |
| VSWR | ≤1.4 |
| Nominal Impedance-Ω | 50 |
| Polarization | Vertical |
| Max.Power-W | 50 |
| Connector | N Female |
| Dimension-mm | 190×216×50 |
| Weight-Kg | 0.3 |
| Mounting way | Wall Mounting |



Specifications

| | |
|------------------------|---------------------------|
| Model | HXWM-900BKDA |
| Frequency Range-MHz | 824~960 |
| Bandwidth-MHz | 136 |
| Gain-dBi | 5 |
| Horizontal Beamwidth-° | 85 |
| vertical beamwidth-° | 58 |
| F/B Ratio-dB | ≥16 |
| VSWR | ≤1.5 |
| Nominal Impedance-Ω | 50 |
| Polarization | Vertical |
| Max.Power-W | 100 |
| Connector | SMA male or customization |
| Dimension-mm | 185.4×153.4×49.5 |
| Weight-Kg | 0.2 |
| Mounting way | Wall Mounting |



800-900MHz Antennas

Panel Antennas

Specifications

| | |
|------------------------|---------------------------|
| Model | HXWM-900BKM |
| Frequency Range-MHz | 902~928 |
| Bandwidth-MHz | 26 |
| Gain-dBi | 7 |
| Horizontal Beamwidth-° | 70 |
| vertical beamwidth-° | 50 |
| F/B Ratio-dB | ≥18 |
| VSWR | ≤1.4 |
| Nominal Impedance-Ω | 50 |
| Polarization | Vertical |
| Max.Power-W | 50 |
| Connector | N Female or customization |
| Dimension-mm | 210×180×44 |
| Weight-Kg | 0.6 |
| Mounting way | Wall Mounting |



Specifications

| | |
|------------------------|---------------------------|
| Model | HXWM-915BKBH |
| Frequency Range-MHz | 902~928 |
| Bandwidth-MHz | 26 |
| Gain-dBi | 9 |
| Horizontal Beamwidth-° | 65 |
| vertical beamwidth-° | 60 |
| F/B Ratio-dB | ≥18 |
| VSWR | ≤1.3 |
| Nominal Impedance-Ω | 50 |
| Polarization | Horizontal |
| Max.Power-W | 50 |
| Connector | N Female or customization |
| Dimension-mm | 250×220×60 |
| Weight-Kg | 1.4 |
| Mast Diameter-mm | φ40-50 |

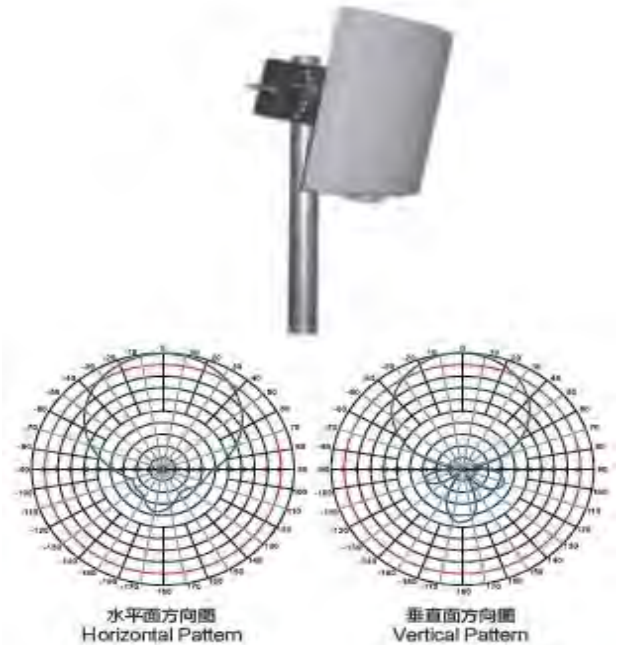


800-900MHz Antennas

Panel Antennas

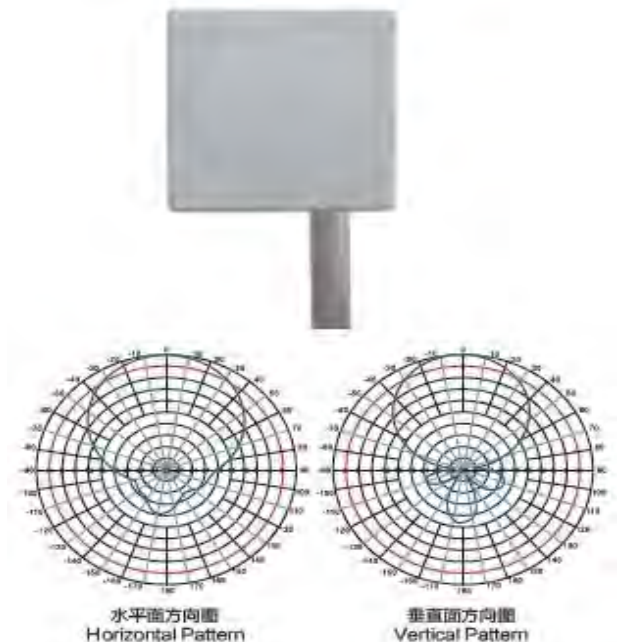
Specifications

| | |
|------------------------|------------------------|
| Model | HXWM-915BKBY |
| Frequency Range-MHz | 902~928 |
| Bandwidth-MHz | 26 |
| Gain-dBi | 7 |
| Horizontal Beamwidth-° | 70 |
| vertical beamwidth-° | 58 |
| F/B Ratio-dB | ≥18 |
| VSWR | ≤1.5 |
| Nominal Impedance-Ω | 50 |
| Polarization | Vertical or Horizontal |
| Max.Power-W | 50 |
| Connector | N Female |
| Dimension-mm | 240×230×50 |
| Weight-Kg | 0.35 |
| Mast Diameter-mm | φ40-50 |



Specifications

| | |
|------------------------|------------------------|
| Model | HXWM-915BKR |
| Frequency Range-MHz | 902~928 |
| Bandwidth-MHz | 26 |
| Gain-dBi | 9 |
| Horizontal Beamwidth-° | 65 |
| vertical beamwidth-° | 60 |
| F/B Ratio-dB | ≥18 |
| VSWR | ≤1.3 |
| Nominal Impedance-Ω | 50 |
| Polarization | Vertical or Horizontal |
| Max.Power-W | 50 |
| Connector | N Female |
| Dimension-mm | 261×261×35 |
| Weight-Kg | 1.2 |
| Mast Diameter-mm | φ40-50 |



800-900MHz Antennas Panel Antennas

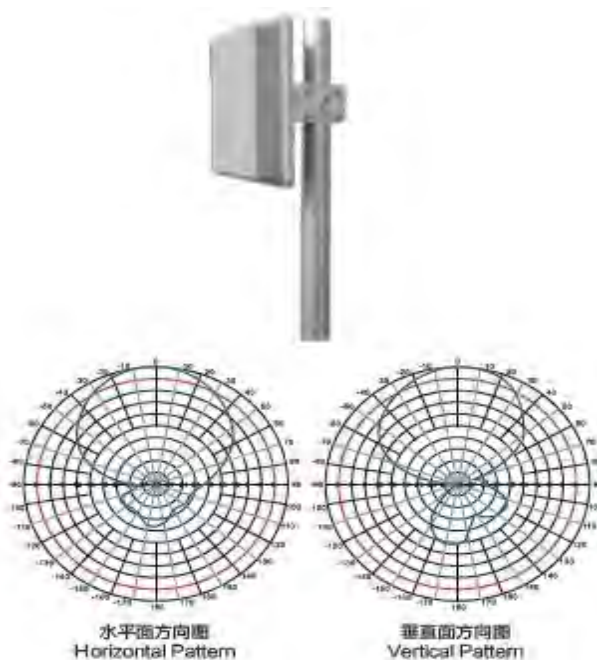
Specifications

| | |
|------------------------|---------------------------|
| Model | HXWM-915BQ8HW |
| Frequency Range-MHz | 860~928 |
| Bandwidth-MHz | 68 |
| Gain-dBi | 8 |
| Horizontal Beamwidth-° | 65 |
| vertical beamwidth-° | 60 |
| F/B Ratio-dB | ≥15 |
| VSWR | ≤1.5 |
| Nominal Impedance-Ω | 50 |
| Polarization | Horizontal |
| Max.Power-W | 100 |
| Connector | SMA male or customization |
| Dimension-mm | 320×200×10 |
| Weight-Kg | 2 |
| Mast Diameter-mm | φ40-50 |



Specifications

| | |
|------------------------|---------------------------|
| Model | HXWM-915EA9 |
| Frequency Range-MHz | 902~928 |
| Bandwidth-MHz | 26 |
| Gain-dBi | 9 |
| Horizontal Beamwidth-° | 60 |
| vertical beamwidth-° | 60 |
| F/B Ratio-dB | ≥20 |
| VSWR | ≤1.5 |
| Nominal Impedance-Ω | 50 |
| Polarization | Vertical or Horizontal |
| Max.Power-W | 20 |
| Connector | SMA male or customization |
| Dimension-mm | 325×325×65 |
| Weight-Kg | 2.1 |
| Mast Diameter-mm | φ40-50 |

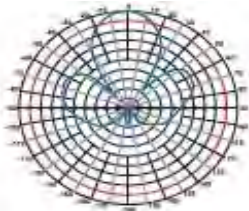


800-900MHz Antennas

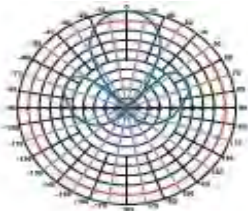
Panel Antennas

Specifications

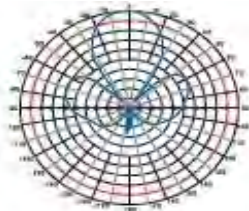
| Model | HXWM-915BQ12C | HXWM-915BQ12CH | HXWM-915Q12CHC | HXWM-915Q12CR | HXWM-915Q12CRC |
|------------------------|------------------------------|------------------------------|------------------------------|------------------------------|------------------------------|
| Frequency Range-MHz | 902~928 | 902~928 | 902~928 | 865~869/902~928 | 902~928 |
| Bandwidth-MHz | 26 | 26 | 26 | 4/26 | 26 |
| Gain-dBi | 12 | 12 | 12 | 12 | 12 |
| Horizontal Beamwidth-° | 36 | 36 | 36 | 36 | 36 |
| vertical beamwidth-° | 35 | 35 | 35 | 35 | 35 |
| F/B Ratio-dB | ≥18 | ≥18 | ≥18 | ≥23 | ≥18 |
| VSWR | ≤1.3 | ≤1.3 | ≤1.3 | ≤1.3 | ≤1.3 |
| Nominal Impedance-Ω | 50 | 50 | 50 | 50 | 50 |
| Polarization | Vertical | Horizontal | Horizontal | Circular Polarization | Circular Polarization |
| Max.Power-W | 50 | 50 | 50 | 50 | 50 |
| Connector | N Female or customization | N Female or customization | N Female or customization | N Female or customization | N Female or customization |
| Dimension-mm | 450×450×40 | 450×450×40 | 450×450×40 | 450×450×40 | 450×450×40 |
| Weight-Kg | 1.8 | 1.8 | 3 | 4 | 3 |



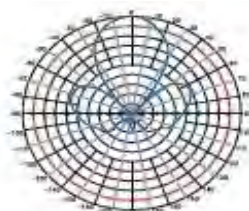
水平面方向图
Horizontal Pattern



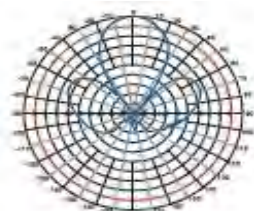
水平面方向图
Horizontal Pattern



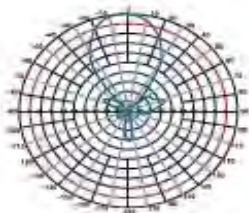
水平面方向图
Horizontal Pattern



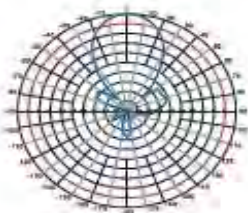
水平面方向图
Horizontal Pattern



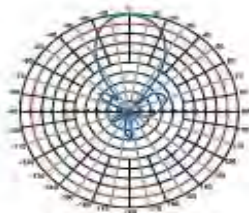
水平面方向图
Horizontal Pattern



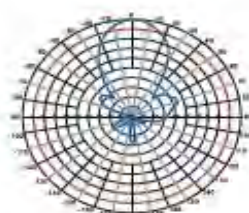
垂直面方向图
Vertical Pattern



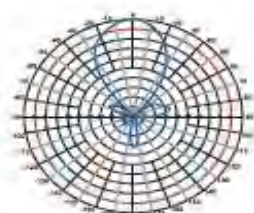
垂直面方向图
Vertical Pattern



垂直面方向图
Vertical Pattern



垂直面方向图
Vertical Pattern



垂直面方向图
Vertical Pattern



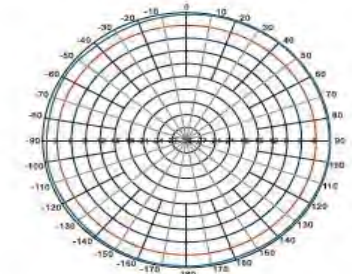
1700-2000MHz Antennas Fiberglass Omni Antennas

Specifications

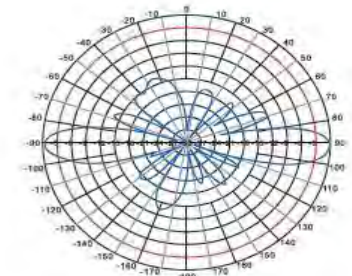
| | |
|------------------------|------------|
| Model | HXOA-1800A |
| Frequency Range-MHz | 1710~1880 |
| Bandwidth-MHz | 170 |
| Gain-dBi | 10 |
| Horizontal Beamwidth-° | 360 |
| vertical beamwidth-° | 16 |
| VSWR | ≤1.5 |
| Nominal Impedance-Ω | 50 |
| Polarization | Vertical |
| Max.Power-W | 100 |
| Connector | N Female |
| Dimension-m | 1.8 |
| Weight-Kg | 1.74 |
| Wind Velocity-m/s | 60 |
| Mast Diameter-mm | φ40-50 |

Specifications

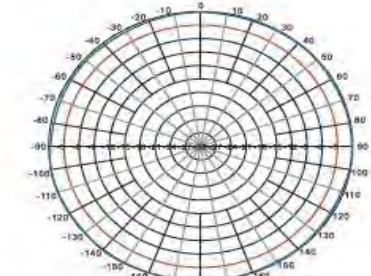
| | |
|------------------------|--------------|
| Model | HXOA-1800A10 |
| Frequency Range-MHz | 1710~1880 |
| Bandwidth-MHz | 170 |
| Gain-dBi | 10 |
| Horizontal Beamwidth-° | 360 |
| vertical beamwidth-° | 10.5 |
| VSWR | ≤1.5 |
| Nominal Impedance-Ω | 50 |
| Polarization | Vertical |
| Max.Power-W | 300 |
| Connector | N Female |
| Dimension-m | φ36×1200 |
| Weight-Kg | 0.7 |
| Wind Velocity-m/s | 60 |
| Mast Diameter-mm | φ35-50 |



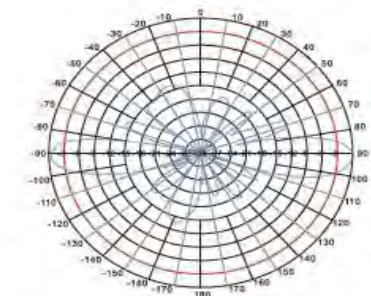
水平面方向图
Horizontal Pattern



垂直面方向图
Vertical Pattern



水平面方向图
Horizontal Pattern

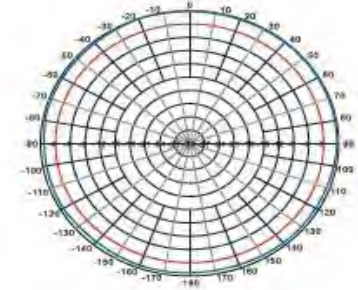


垂直面方向图
Vertical Pattern

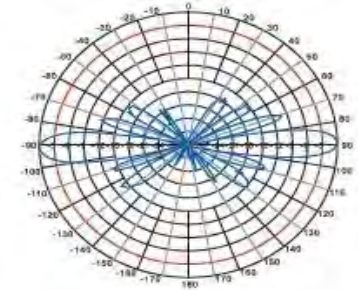
1700-2000MHz Antennas Fiberglass Omni Antennas

Specifications

| | |
|------------------------|-----------------|
| Model | HXOA-1800AT |
| Frequency Range-MHz | 1785~1805 |
| Bandwidth-MHz | 20 |
| Gain-dBi | 9 |
| Horizontal Beamwidth-° | 360 |
| vertical beamwidth-° | 12 |
| VSWR | ≤1.4 |
| Nominal Impedance-Ω | 50 |
| Polarization | Vertical |
| Max.Power-W | 300 |
| Connector | N male/N Female |
| Dimension-mm | φ18.5×880 |
| Weight-Kg | 0.82 |
| Wind Velocity-m/s | 60 |
| Mast Diameter-mm | φ35-50 |



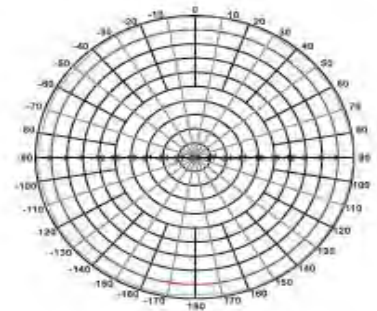
水平面方向图
Horizontal Pattern



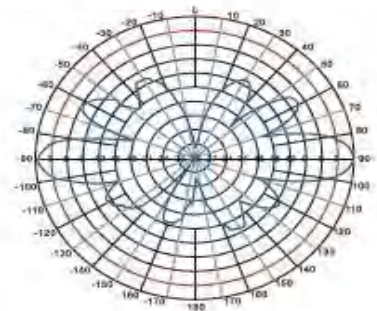
垂直面方向图
Vertical Pattern

Specifications

| | |
|------------------------|------------|
| Model | HXOA-1800B |
| Frequency Range-MHz | 1710~1880 |
| Bandwidth-MHz | 170 |
| Gain-dBi | 8 |
| Horizontal Beamwidth-° | 360 |
| vertical beamwidth-° | 16 |
| VSWR | ≤1.5 |
| Nominal Impedance-Ω | 50 |
| Polarization | Vertical |
| Max.Power-W | 100 |
| Connector | N Female |
| Dimension-mm | 1.4 |
| Weight-Kg | 1.74 |
| Wind Velocity-m/s | 60 |
| Mast Diameter-mm | φ40-50 |



水平面方向图
Horizontal Pattern

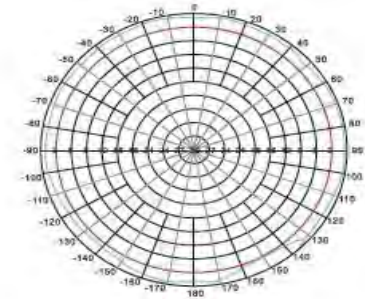


垂直面方向图
Vertical Pattern

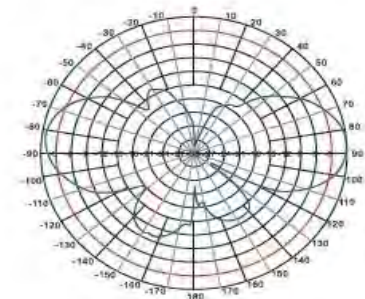
1700-2000MHz Antennas Fiberglass Omni Antennas

Specifications

| | |
|------------------------|-------------|
| Model | HXOA-1800T6 |
| Frequency Range-MHz | 1800~1900 |
| Bandwidth-MHz | 100 |
| Gain-dBi | 6 |
| Horizontal Beamwidth-° | 360 |
| vertical beamwidth-° | 28 |
| VSWR | ≤1.5 |
| Nominal Impedance-Ω | 50 |
| Polarization | Vertical |
| Max.Power-W | 100 |
| Connector | N Female |
| Dimension-mm | 505 |
| Weight-Kg | 0.24 |
| Wind Velocity-m/s | 60 |



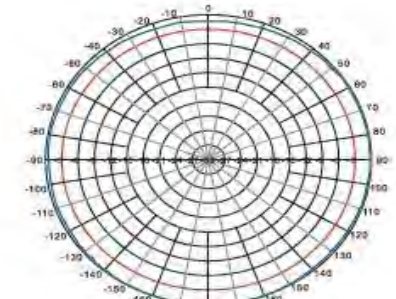
水平面方向图
Horizontal Pattern



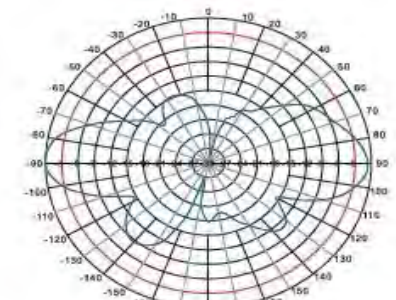
垂直面方向图
Vertical Pattern

Specifications

| | |
|------------------------|-------------|
| Model | HXOA-1800W7 |
| Frequency Range-MHz | 1710~1880 |
| Bandwidth-MHz | 170 |
| Gain-dBi | 7 |
| Horizontal Beamwidth-° | 360 |
| vertical beamwidth-° | 25 |
| VSWR | ≤1.5 |
| Nominal Impedance-Ω | 50 |
| Polarization | Vertical |
| Max.Power-W | 100 |
| Connector | N Female |
| Dimension-mm | 550 |
| Weight-Kg | 0.5 |
| Wind Velocity-m/s | 60 |
| Mast Diameter-mm | φ40-50 |



水平面方向图
Horizontal Pattern

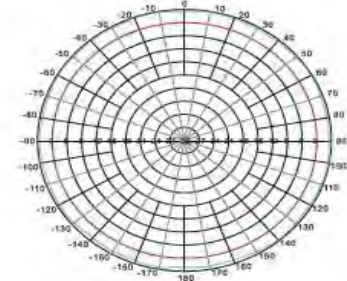


垂直面方向图
Vertical Pattern

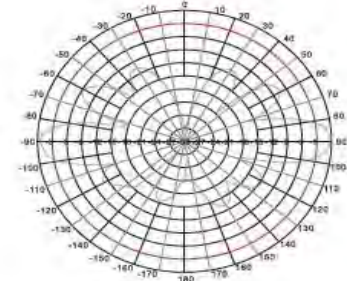
1700-2000MHz Antennas Fiberglass Omni Antennas

Specifications

| | |
|------------------------|-----------------|
| Model | HXOA-1820T8 |
| Frequency Range-MHz | 1805~2025 |
| Bandwidth-MHz | 220 |
| Gain-dBi | 8 |
| Horizontal Beamwidth-° | 360 |
| vertical beamwidth-° | 16 |
| VSWR | ≤1.6 |
| Nominal Impedance-Ω | 50 |
| Polarization | Vertical |
| Max.Power-W | 100 |
| Connector | N Female |
| Dimension-mm | 730 |
| Weight-Kg | 1.05 |
| Wind Velocity-m/s | 60 |
| Mounting way | Flange Mounting |



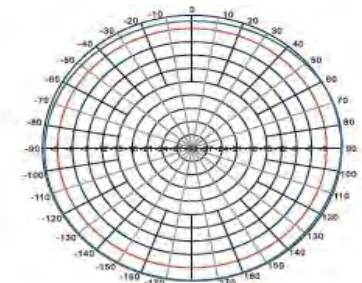
水平面方向图
Horizontal Pattern



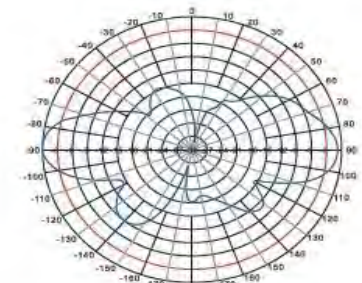
垂直面方向图
Vertical Pattern

Specifications

| | |
|------------------------|--------------|
| Model | HXOA-1900AT6 |
| Frequency Range-MHz | 1850~1990 |
| Bandwidth-MHz | 140 |
| Gain-dBi | 6 |
| Horizontal Beamwidth-° | 360 |
| vertical beamwidth-° | 25 |
| VSWR | ≤1.5 |
| Nominal Impedance-Ω | 50 |
| Polarization | Vertical |
| Max.Power-W | 100 |
| Connector | N Female |
| Dimension-mm | 500 |
| Weight-Kg | 0.48 |
| Wind Velocity-m/s | 60 |
| Mast Diameter-mm | φ40-50 |



水平面方向图
Horizontal Pattern

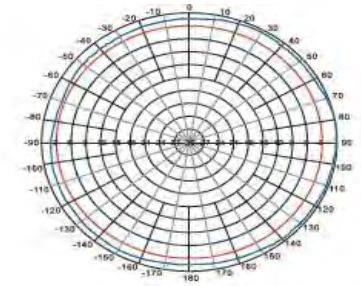


垂直面方向图
Vertical Pattern

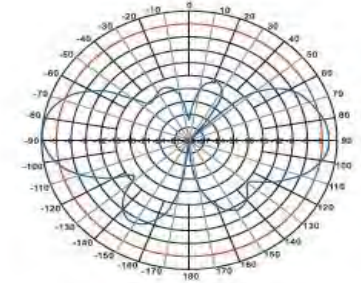
1700-2000MHz Antennas Fiberglass Omni Antennas

Specifications

| | |
|------------------------|--------------|
| Model | HXOA-1900B15 |
| Frequency Range-MHz | 1850~1990 |
| Bandwidth-MHz | 140 |
| Gain-dBi | 5 |
| Horizontal Beamwidth-° | 360 |
| vertical beamwidth-° | 30 |
| VSWR | ≤1.5 |
| Nominal Impedance-Ω | 50 |
| Polarization | Vertical |
| Max.Power-W | 100 |
| Connector | N Female |
| Dimension-mm | 0.33 |
| Weight-Kg | 0.58 |
| Wind Velocity-m/s | 60 |
| Mast Diameter-mm | φ35-50 |



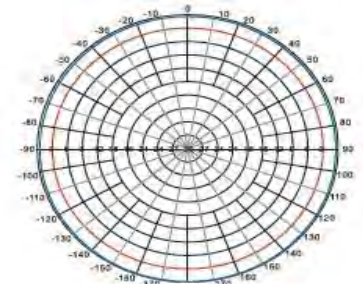
水平面方向图
Horizontal Pattern



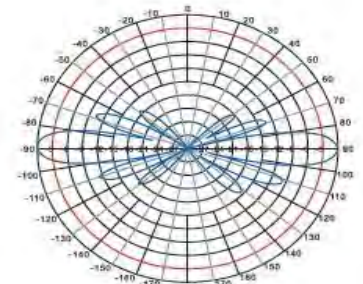
垂直面方向图
Vertical Pattern

Specifications

| | |
|------------------------|--------------|
| Model | HXOA-1900B18 |
| Frequency Range-MHz | 1850~1990 |
| Bandwidth-MHz | 140 |
| Gain-dBi | 8 |
| Horizontal Beamwidth-° | 360 |
| vertical beamwidth-° | 18 |
| VSWR | ≤1.5 |
| Nominal Impedance-Ω | 50 |
| Polarization | Vertical |
| Max.Power-W | 100 |
| Connector | N Female |
| Dimension-m | 0.55 |
| Weight-Kg | 0.63 |
| Wind Velocity-m/s | 60 |
| Mast Diameter-mm | φ35-50 |



水平面方向图
Horizontal Pattern

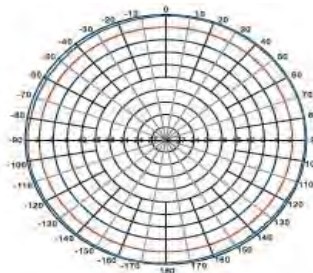


垂直面方向图
Vertical Pattern

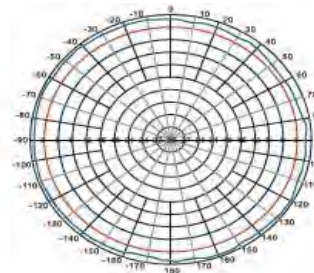
1700-2000MHz Antennas Fiberglass Omni Antennas

Specifications

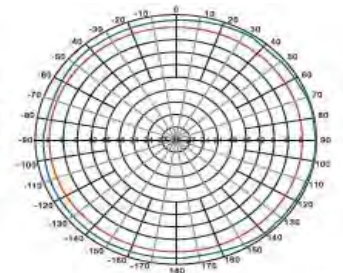
| Model | HXOA-1900C10 | HXOA-1900C | HXOA-1900E5 |
|------------------------|---------------------------|---------------------------|---------------------------|
| Frequency Range-MHz | 1890~1920 | 1890~1920 | 1890~1920 |
| Bandwidth-MHz | 30 | 30 | 30 |
| Gain-dBi | 7.2 | 7.2 | 9 |
| Horizontal Beamwidth-° | 360 | 360 | 360 |
| vertical beamwidth-° | 20 | 20 | 12 |
| VSWR | ≤1.4 | ≤1.4 | ≤1.5 |
| Nominal Impedance-Ω | 50 | 50 | 50 |
| Polarization | Vertical | Vertical | Vertical |
| Max.Power-W | 200 | 100 | 200 |
| Connector | TNC male or customization | N Female or customization | TNC male or customization |
| Dimension-m | φ25×575 | φ25×575 | φ25×880 |
| Weight-Kg | 0.45 | 0.45 | 0.85 |
| Wind Velocity-m/s | 60 | 60 | 60 |
| Mast Diameter-mm | φ40-50 | φ40-50 | φ40-50 |



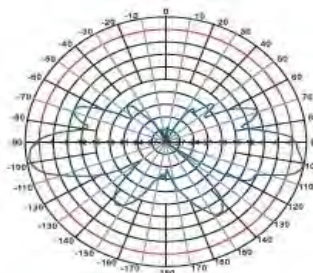
水平面方向图
Horizontal Pattern



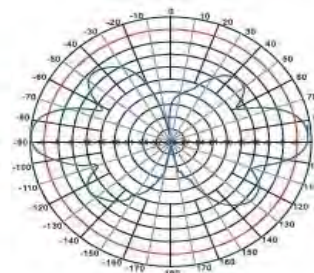
水平面方向图
Horizontal Pattern



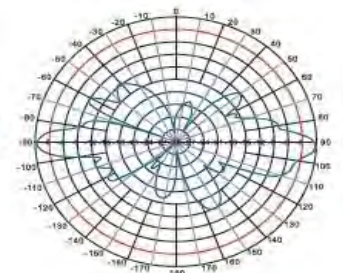
水平面方向图
Horizontal Pattern



垂直面方向图
Vertical Pattern



垂直面方向图
Vertical Pattern

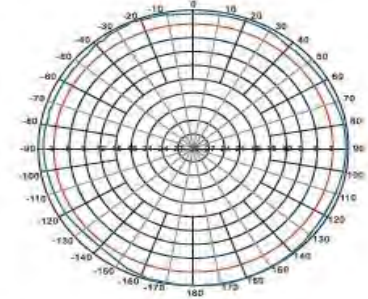


垂直面方向图
Vertical Pattern

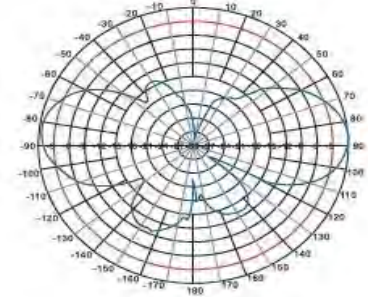
1700-2000MHz Antennas Fiberglass Omni Antennas

Specifications

| | |
|------------------------|-------------|
| Model | HXOA-1900T6 |
| Frequency Range-MHz | 1900~2000 |
| Bandwidth-MHz | 100 |
| Gain-dBi | 6 |
| Horizontal Beamwidth-° | 360 |
| vertical beamwidth-° | 28 |
| VSWR | ≤1.5 |
| Nominal Impedance-Ω | 50 |
| Polarization | Vertical |
| Max.Power-W | 100 |
| Connector | N Female |
| Dimension-mm | 505 |
| Weight-Kg | 0.24 |
| Wind Velocity-m/s | 60 |
| Mast Diameter-mm | φ40-50 |



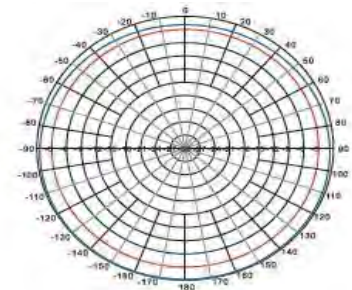
水平面方向图
Horizontal Pattern



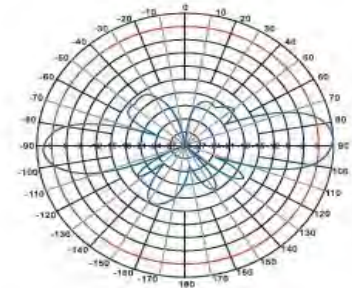
垂直面方向图
Vertical Pattern

Specifications

| | |
|------------------------|--------------|
| Model | HXOA-1900T8C |
| Frequency Range-MHz | 1890~1920 |
| Bandwidth-MHz | 30 |
| Gain-dBi | 8 |
| Horizontal Beamwidth-° | 360 |
| vertical beamwidth-° | 18 |
| VSWR | ≤1.5 |
| Nominal Impedance-Ω | 50 |
| Polarization | Vertical |
| Max.Power-W | 100 |
| Connector | N Male |
| Dimension-m | 0.68 |
| Weight-Kg | 0.35 |
| Wind Velocity-m/s | 60 |
| Mast Diameter-mm | φ40-50 |



水平面方向图
Horizontal Pattern



垂直面方向图
Vertical Pattern

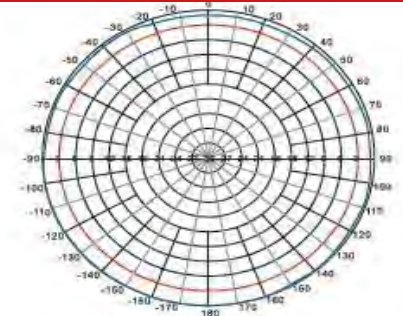
1700-2000MHz Antennas Fiberglass Omni Antennas

Specifications

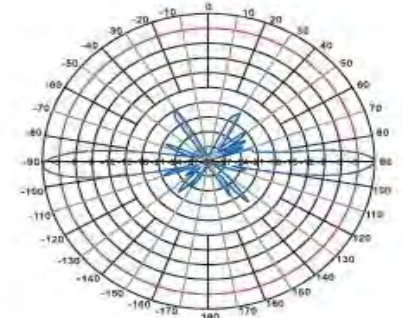
| | |
|------------------------|--------------|
| Model | HXOA-2000A11 |
| Frequency Range-MHz | 1920~2170 |
| Bandwidth-MHz | 250 |
| Gain-dBi | 11 |
| Horizontal Beamwidth-° | 360 |
| vertical beamwidth-° | 6~8 |
| VSWR | ≤1.5 |
| Nominal Impedance-Ω | 50 |
| Polarization | Vertical |
| Max.Power-W | 100 |
| Connector | 7/16DIN-F |
| Dimension-mm | φ60×1500 |
| Weight-Kg | 3.1 |
| Wind Velocity-m/s | 60 |
| Mast Diameter-mm | φ40-50 |

Specifications

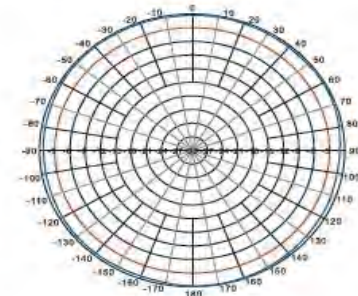
| | |
|------------------------|-----------------|
| Model | HXOA-2000T8A |
| Frequency Range-MHz | 2000~2170 |
| Bandwidth-MHz | 170 |
| Gain-dBi | 8 |
| Horizontal Beamwidth-° | 360 |
| vertical beamwidth-° | 16 |
| VSWR | ≤1.5 |
| Nominal Impedance-Ω | 50 |
| Polarization | Vertical |
| Max.Power-W | 100 |
| Connector | N Female |
| Dimension-mm | 690 |
| Weight-Kg | 1 |
| Wind Velocity-m/s | 60 |
| Mounting way | Flange mounting |



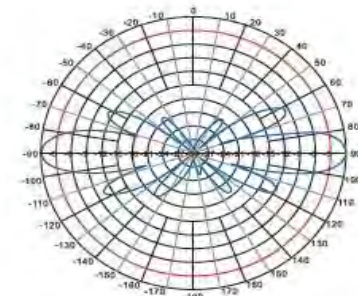
水平面方向图
Horizontal Pattern



垂直面方向图
Vertical Pattern



水平面方向图
Horizontal Pattern

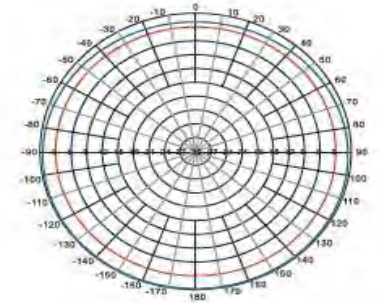


垂直面方向图
Vertical Pattern

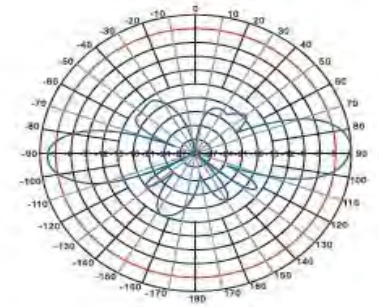
1700-2000MHz Antennas Fiberglass Omni Antennas

Specifications

| | |
|------------------------|-----------------|
| Model | HXOA-1719T8 |
| Frequency Range-MHz | 1710~1920 |
| Bandwidth-MHz | 210 |
| Gain-dBi | 8 |
| Horizontal Beamwidth-° | 360 |
| vertical beamwidth-° | 16 |
| VSWR | ≤1.6 |
| Nominal Impedance-Ω | 50 |
| Polarization | Vertical |
| Max.Power-W | 100 |
| Connector | N Female |
| Dimension-mm | 760 |
| Weight-Kg | 1.12 |
| Wind Velocity-m/s | 60 |
| Mounting way | Flange mounting |



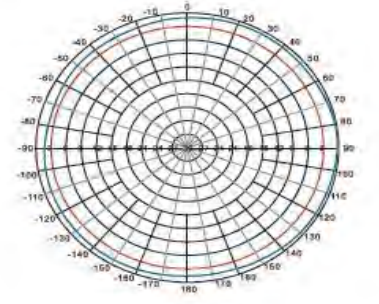
水平面方向图
Horizontal Pattern



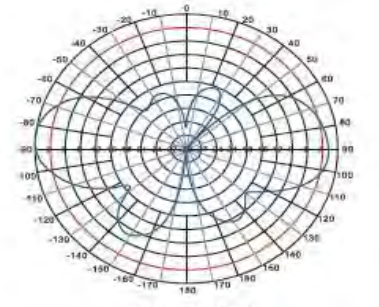
垂直面方向图
Vertical Pattern

Specifications

| | |
|------------------------|-----------------|
| Model | HXOA-1720T5A |
| Frequency Range-MHz | 1700~2000 |
| Bandwidth-MHz | 300 |
| Gain-dBi | 5 |
| Horizontal Beamwidth-° | 360 |
| vertical beamwidth-° | 35 |
| VSWR | ≤2.5 |
| Nominal Impedance-Ω | 50 |
| Polarization | Vertical |
| Max.Power-W | 100 |
| Connector | N Female |
| Dimension-mm | 390 |
| Weight-Kg | 0.9 |
| Wind Velocity-m/s | 60 |
| Mounting way | Flange mounting |



水平面方向图
Horizontal Pattern

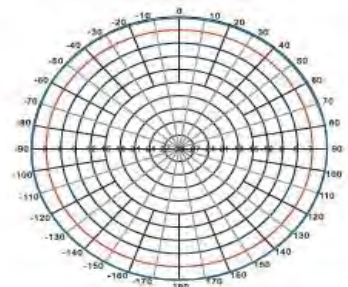


垂直面方向图
Vertical Pattern

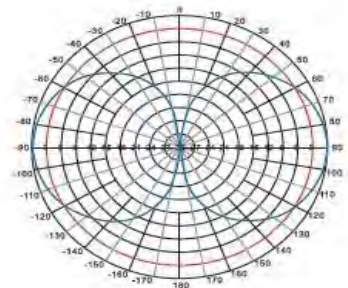
1700-2000MHz Antennas Fiberglass Omni Antennas

Specifications

| | |
|------------------------|---------------|
| Model | HXOA-1922A3 |
| Frequency Range-MHz | 1900~2200 |
| Bandwidth-MHz | 300 |
| Gain-dBi | 3 |
| Horizontal Beamwidth-° | 360 |
| vertical beamwidth-° | 55 |
| VSWR | ≤1.5 |
| Nominal Impedance-Ω | 50 |
| Polarization | Vertical |
| Max.Power-W | 200 |
| Connector | N Female |
| Dimension-mm | φ3.6×19 |
| Weight-Kg | 0.3 |
| Wind Velocity-m/s | 60 |
| Note | Ceiling Mount |



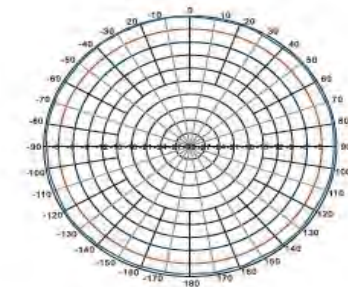
水平面方向图
Horizontal Pattern



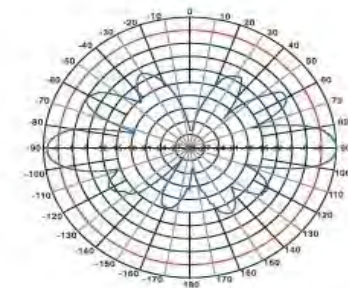
垂直面方向图
Vertical Pattern

Specifications

| | |
|------------------------|-------------|
| Model | HXOA-2100T8 |
| Frequency Range-MHz | 2100~2200 |
| Bandwidth-MHz | 100 |
| Gain-dBi | 8 |
| Horizontal Beamwidth-° | 360 |
| vertical beamwidth-° | 16 |
| VSWR | ≤1.5 |
| Nominal Impedance-Ω | 50 |
| Polarization | Vertical |
| Max.Power-W | 50 |
| Connector | N Male |
| Dimension-mm | 600 |
| Weight-Kg | 0.24 |
| Wind Velocity-m/s | 60 |



水平面方向图
Horizontal Pattern



垂直面方向图
Vertical Pattern

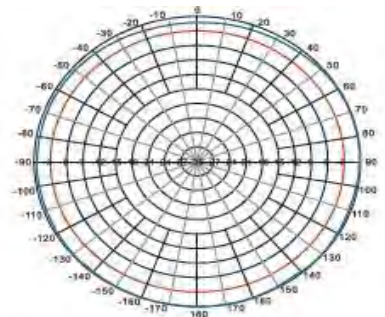
1700-2000MHz Antennas Fiberglass Omni Antennas

Specifications

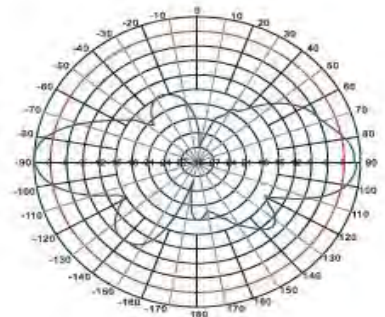
| | |
|------------------------|--------------|
| Model | HXOA-2100AT6 |
| Frequency Range-MHz | 2100~2200 |
| Bandwidth-MHz | 100 |
| Gain-dBi | 6 |
| Horizontal Beamwidth-° | 360 |
| vertical beamwidth-° | 25 |
| VSWR | ≤1.5 |
| Nominal Impedance-Ω | 50 |
| Polarization | Vertical |
| Max.Power-W | 100 |
| Connector | N type |
| Dimension-m | 0.5 |
| Weight-Kg | 0.5 |
| Wind Velocity-m/s | 60 |
| Mast Diameter-mm | φ30~50 |

Specifications

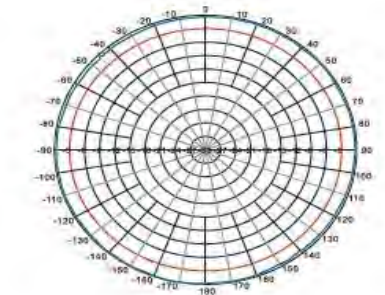
| | |
|------------------------|---------------------------|
| Model | HXOA-2100AT9 |
| Frequency Range-MHz | 2050~2150 |
| Bandwidth-MHz | 100 |
| Gain-dBi | 9 |
| Horizontal Beamwidth-° | 360 |
| vertical beamwidth-° | 13 |
| VSWR | ≤1.5 |
| Nominal Impedance-Ω | 50 |
| Polarization | Vertical |
| Max.Power-W | 100 |
| Connector | N Female or customization |
| Dimension-m | 0.8 |
| Weight-Kg | 0.58 |
| Wind Velocity-m/s | 60 |
| Mast Diameter-mm | φ40~50 |



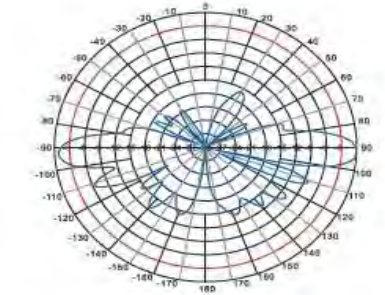
水平面方向图
Horizontal Pattern



垂直面方向图
Vertical Pattern



水平面方向图
Horizontal Pattern

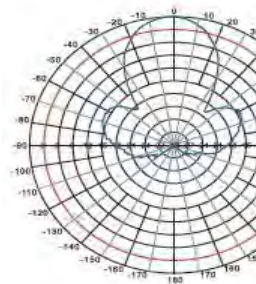


垂直面方向图
Vertical Pattern

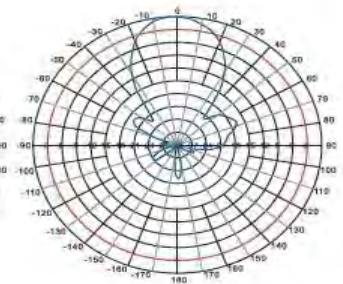
1700-2000MHz Antennas Panel Antennas

Specifications

| | |
|------------------------|------------------------|
| Model | HXWM-1800BKB |
| Frequency Range-MHz | 1700~1920 |
| Bandwidth-MHz | 220 |
| Gain-dBi | 13 |
| Horizontal Beamwidth-° | 35 |
| vertical beamwidth-° | 35 |
| VSWR | ≤1.5 |
| Nominal Impedance-Ω | 50 |
| Polarization | Vertical or Horizontal |
| Max.Power-W | 100 |
| Connector | N female or TNC female |
| Dimension-mm | 250×220×60 |
| Weight-Kg | 1.3 |
| Wind Velocity-m/s | 60 |
| Mast Diameter-mm | φ40~50 |



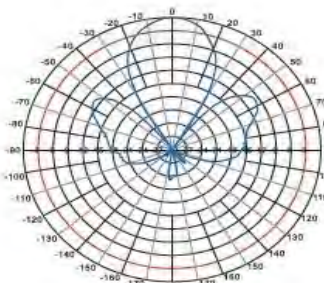
水平面方向图
Horizontal Pattern



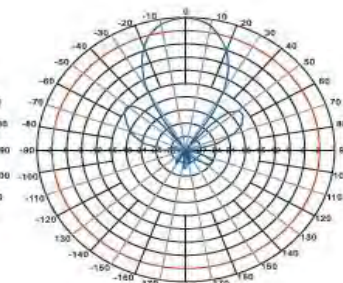
垂直面方向图
Vertical Pattern

Specifications

| | |
|------------------------|------------------|
| Model | HXWM-1800BKT12×2 |
| Frequency Range-MHz | 1780~1850 |
| Bandwidth-MHz | 70 |
| Gain-dBi | 12 |
| Horizontal Beamwidth-° | 30±2 |
| vertical beamwidth-° | 30±2 |
| F/B Ratio-dB | ≥25 |
| VSWR | ≤2.0 |
| Polarization | 45° |
| Max.Power-W | 6 |
| Connector | MMCX-C-J1.5 |
| Dimension-mm | 305×305×25 |
| Weight-Kg | 1.4 |
| Wind Velocity-m/s | 60 |
| Mast Diameter-mm | φ35~50 |



水平面方向图
Horizontal Pattern

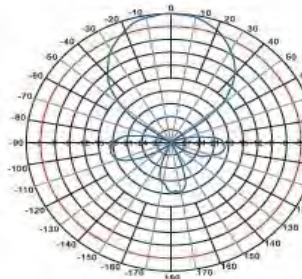


垂直面方向图
Vertical Pattern

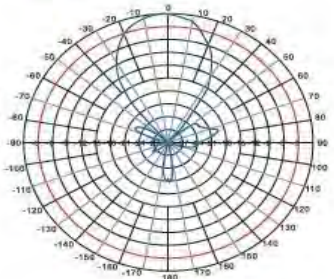
1700-2000MHz Antennas Panel Antennas

Specifications

| | |
|------------------------|--------------|
| Model | HXWM-1800L12 |
| Frequency Range-MHz | 1710~1880 |
| Bandwidth-MHz | 170 |
| Gain-dBi | 12 |
| Horizontal Beamwidth-° | 45 |
| vertical beamwidth-° | 35 |
| VSWR | ≤1.5 |
| Nominal Impedance-Ω | 50 |
| Polarization | Vertical |
| Max.Power-W | 50 |
| Connector | N female |
| Dimension-mm | 320×200×100 |
| Weight-Kg | 2 |
| Wind Velocity-m/s | 60 |
| Mast Diameter-mm | φ40~50 |



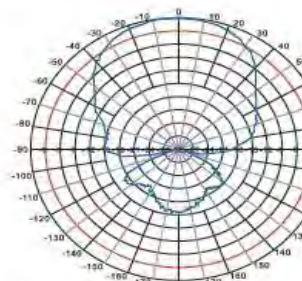
水平面方向图
Horizontal Pattern



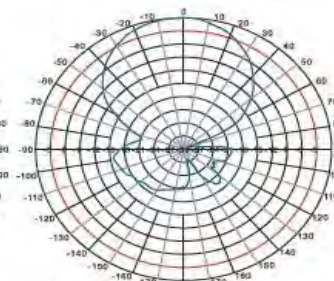
垂直面方向图
Vertical Pattern

Specifications

| | |
|------------------------|---------------|
| Model | HXOA-1900BKC |
| Frequency Range-MHz | 1700~2500 |
| Bandwidth-MHz | 800 |
| Gain-dBi | 8 |
| Horizontal Beamwidth-° | 68 |
| vertical beamwidth-° | 58 |
| VSWR | ≤2.0 |
| Nominal Impedance-Ω | 50 |
| Polarization | Vertical |
| Max.Power-W | 100 |
| Connector | N Female |
| Dimension-mm | 190×216×50 |
| Weight-g | 300 |
| Mounting way | Wall mounting |



水平面方向图
Horizontal Pattern



垂直面方向图
Vertical Pattern

1700-2000MHz Antennas Panel Antennas

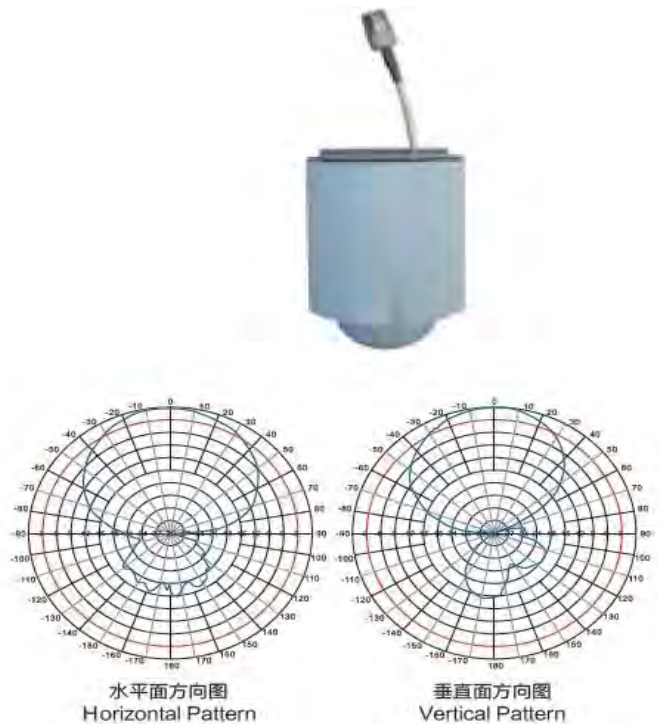
Specifications

| | |
|------------------------|---------------------------|
| Model | HXWM-1900BKD |
| Frequency Range-MHz | 1700~2500 |
| Bandwidth-MHz | 800 |
| Gain-dBi | 8 |
| Horizontal Beamwidth-° | 68 |
| vertical beamwidth-° | 58 |
| VSWR | ≤1.5 |
| Nominal Impedance-Ω | 50 |
| Polarization | Vertical |
| Max.Power-W | 100 |
| Connector | N female or customization |
| Dimension-mm | 186×155×50 |
| Weight-g | 200 |
| Mounting way | Wall mounting |



Specifications

| | |
|------------------------|---------------------------|
| Model | HXWM-1900BKF |
| Frequency Range-MHz | 1850~1990 |
| Bandwidth-MHz | 140 |
| Gain-dBi | 9 |
| Horizontal Beamwidth-° | 55 |
| vertical beamwidth-° | 65 |
| VSWR | ≤1.5 |
| Polarization | Vertical |
| Max.Power-W | 50 |
| Connector | TNC male or customization |
| Dimension-mm | 145×97×38 |
| Weight-Kg | 200 |
| Wind Velocity-m/s | 60 |
| Mast Diameter-mm | φ40~50 |



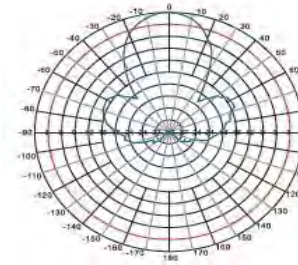
Jiangsu Hengxin WirelessTechnology Co., Ltd. (Antenna Factory)

1700-2000MHz Antennas

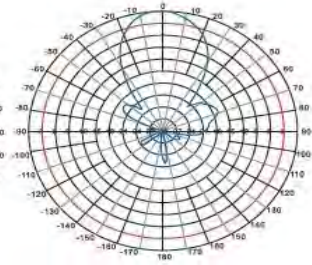
Panel Antennas

Specifications

| | |
|------------------------|------------------------|
| Model | HXWM-1900BKR |
| Frequency Range-MHz | 1850~1990 |
| Bandwidth-MHz | 140 |
| Gain-dBi | 14 |
| Horizontal Beamwidth-° | 35 |
| vertical beamwidth-° | 35 |
| F/B Ratio-dB | ≥23 |
| VSWR | ≤1.5 |
| Nominal Impedance-Ω | 50 |
| Polarization | Vertical or Horizontal |
| Max.Power-W | 50 |
| Connector | N female |
| Dimension-mm | 261×261×35 |
| Weight-Kg | 1.1 |
| Wind Velocity-m/s | 60 |
| Mast Diameter-mm | φ40~50 |



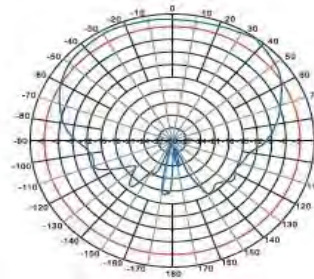
水平面方向图
Horizontal Pattern



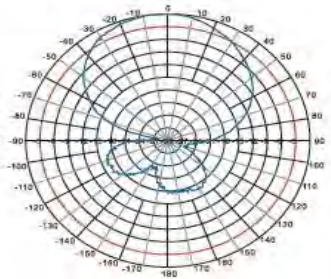
垂直面方向图
Vertical Pattern

Specifications

| | |
|------------------------|---------------------------|
| Model | HXWM-1900BFA |
| Frequency Range-MHz | 1850~1990 |
| Bandwidth-MHz | 140 |
| Gain-dBi | 10 |
| Horizontal Beamwidth-° | 60 |
| vertical beamwidth-° | 50 |
| F/B Ratio-dB | ≥18 |
| VSWR | ≤1.5 |
| Nominal Impedance-Ω | 50 |
| Polarization | Vertical |
| Max.Power-W | 50 |
| Connector | SMA male or customization |
| Dimension-mm | 140×120×40 |
| Weight-Kg | 0.55 |



水平面方向图
Horizontal Pattern

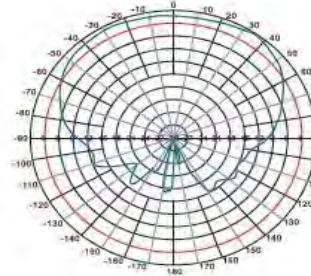


垂直面方向图
Vertical Pattern

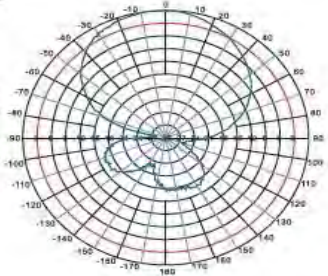
1700-2000MHz Antennas Panel Antennas

Specifications

| | |
|------------------------|---------------------------|
| Model | HXWM-2100BFA |
| Frequency Range-MHz | 1710~2170 |
| Bandwidth-MHz | 460 |
| Gain-dBi | 8 |
| Horizontal Beamwidth-° | 120 |
| vertical beamwidth-° | 70 |
| F/B Ratio-dB | ≥ 13 |
| VSWR | ≤ 1.5 |
| Nominal Impedance-Ω | 50 |
| Polarization | Vertical |
| Max.Power-W | 50 |
| Connector | SMA male or customization |
| Dimension-mm | 100×80×48.3 |
| Weight-Kg | 0.55 |



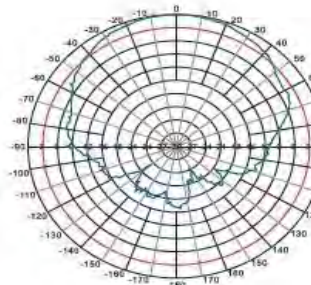
水平面方向图
Horizontal Pattern



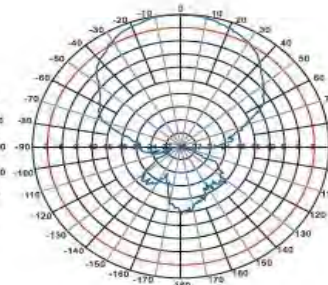
垂直面方向图
Vertical Pattern

Specifications

| | |
|------------------------|----------------------|
| Model | HXWM-2100BKBD |
| Frequency Range-MHz | 1920~2170 |
| Bandwidth-MHz | 250 |
| Gain-dBi | 8 |
| Horizontal Beamwidth-° | 90 |
| vertical beamwidth-° | 65 |
| VSWR | ≤ 1.5 |
| Nominal Impedance-Ω | 50 |
| Polarization | ±45° |
| Max.Power-W | 50 |
| Connector | SMA type or N female |
| Dimension-mm | 244×214×59 |
| Weight-Kg | 1 |



水平面方向图
Horizontal Pattern



垂直面方向图
Vertical Pattern

800-2500MHz Antennas

Fiberglass Omni Antennas

Specifications

| | |
|---------------------|-------------------|
| Model | HXOA-0819T3 |
| Frequency Range-MHz | 806~890/1850~1990 |
| Bandwidth-MHz | 84/140 |
| Gain-dBi | 2.5/3 |
| VSWR | ≤2 |
| Nominal Impedance-Ω | 50 |
| Polarization | Vertical |
| Max.Power-W | 100 |
| Connector | N Female |
| Dimension-mm | 400 |
| Weight-Kg | 0.3 |
| Wind Velocity-m/s | 60 |
| Mast Diameter-mm | φ40~50 |



Specifications

| | |
|------------------------|---------------------------------|
| Model | HXOA-0822A5 |
| Frequency Range-MHz | 824~960/1710~1990/ 1990~2200 |
| Bandwidth-MHz | 136/280/300 |
| Gain-dBi | 5 |
| Horizontal Beamwidth-° | 360 |
| vertical beamwidth-° | 35 |
| VSWR | ≤2.0 |
| Nominal Impedance-Ω | 50 |
| Polarization | Vertical |
| Max.Power-W | 100 |
| Connector | N female |
| Dimension-mm | φ33×359 |
| Weight-Kg | 0.39 |
| Wind Velocity-m/s | 60 |
| Mast Diameter-mm | φ40~50 |



800-2500MHz Antennas

Fiberglass Omni Antennas

Specifications

| | |
|------------------------|-------------------|
| Model | HXOA-800/1900A5 |
| Frequency Range-MHz | 824~960/1710~1990 |
| Bandwidth-MHz | 136/280 |
| Gain-dBi | 2.5/3 |
| Horizontal Beamwidth-° | 360 |
| vertical beamwidth-° | 35 |
| VSWR | ≤2 |
| Nominal Impedance-Ω | 50 |
| Polarization | Vertical |
| Max.Power-W | 100 |
| Connector | N Female |
| Dimension-mm | φ33×359 |
| Weight-g | 390 |
| Wind Velocity-m/s | 60 |
| Mast Diameter-mm | φ40~50 |



Specifications

| | |
|------------------------|-------------------|
| Model | HXOA-900/1800W6 |
| Frequency Range-MHz | 824~960/1710~1990 |
| Bandwidth-MHz | 136/280 |
| Gain-dBi | 6 |
| Horizontal Beamwidth-° | 360 |
| vertical beamwidth-° | 25 |
| VSWR | ≤2.0/≤2.5 |
| Nominal Impedance-Ω | 50 |
| Polarization | Vertical |
| Max.Power-W | 100 |
| Connector | N female |
| Dimension-mm | φ20×600 |
| Weight-Kg | 1.2 |
| Wind Velocity-m/s | 60 |
| Mast Diameter-mm | φ40~50 |



800-2500MHz Antennas

Fiberglass Omni Antennas

Specifications

| | |
|------------------------|---------------------------|
| Model | HXOA-900/1800W6A |
| Frequency Range-MHz | 824~960/1710~1990 |
| Bandwidth-MHz | 136/280 |
| Gain-dBi | 3 |
| Horizontal Beamwidth-° | 360 |
| vertical beamwidth-° | 58 |
| VSWR | $\leq 1.5/\leq 4.0$ |
| Nominal Impedance-Ω | 50 |
| Polarization | Vertical |
| Max.Power-W | 100 |
| Connector | N Female or customization |
| Dimension-mm | φ33×360 |
| Weight-Kg | 1.1 |
| Wind Velocity-m/s | 60 |
| Mast Diameter-mm | φ40~50 |



Specifications

| | |
|------------------------|---|
| Model | HXOA-900/1800WT6 |
| Frequency Range-MHz | 824~960/1710~1990/ 1990~2200 |
| Bandwidth-MHz | 136/280 |
| Gain-dBi | 6 |
| Horizontal Beamwidth-° | 360 |
| vertical beamwidth-° | 28 |
| VSWR | ≤ 2.0 |
| Nominal Impedance-Ω | 50 |
| Polarization | Vertical |
| Max.Power-W | 100 |
| Connector | N male |
| Dimension-mm | φ20×520 |
| Weight-Kg | 1 |
| Wind Velocity-m/s | 60 |
| Note | <ol style="list-style-type: none"> 1. Mount on the equipment directly. 2. Mount with a M110N big magnetic mount |



800-2500MHz Antennas

Panel Antennas

Specifications

| | |
|------------------------|---------------------------|
| Model | HXWM-0825BKMA |
| Frequency Range-MHz | 800~960/1710~2500 |
| Gain-dBi | 8/10 |
| Horizontal Beamwidth-° | 90/70 |
| vertical beamwidth-° | 50/40 |
| VSWR | ≤1.5 |
| Nominal Impedance-Ω | 50 |
| Polarization | Vertical |
| Max.Power-W | 250 |
| Connector | N Female or customization |
| Dimension-mm | 210×260×44 |
| Weight-Kg | 0.65 |
| Mounting way | Wall mounting |



Specifications

| | |
|------------------------|---------------------------|
| Model | HXWM-0825BKML |
| Frequency Range-MHz | 800~960/1710~2500 |
| Gain-dBi | 7/10 |
| Horizontal Beamwidth-° | 70/60 |
| vertical beamwidth-° | 55/45 |
| VSWR | ≤1.5 |
| Nominal Impedance-Ω | 50 |
| Polarization | Vertical |
| Max.Power-W | 50 |
| Connector | N female or customization |
| Dimension-mm | 210×180×44 |
| Weight-Kg | 0.4 |
| Mounting way | Wall mounting |



800-2500MHz Antennas Panel Antennas

Specifications

| | |
|------------------------|---------------------------|
| Model | HXWM-0825BKMX |
| Frequency Range-MHz | 800~960/1710~2500 |
| Gain-dBi | 7/10 |
| Horizontal Beamwidth-° | 70/60 |
| vertical beamwidth-° | 55/45 |
| VSWR | ≤1.5 |
| Nominal Impedance-Ω | 50 |
| Polarization | Vertical |
| Max.Power-W | 50 |
| Connector | N Female or customization |
| Dimension-mm | 210×180×44 |
| Weight-Kg | 0.6 |
| Mounting way | Wall mounting |



Specifications

| | |
|------------------------|---------------------------|
| Model | HXWM-0825BKMLY |
| Frequency Range-MHz | 800~960/1710~2500 |
| Gain-dBi | 7/10 |
| Horizontal Beamwidth-° | 70/60 |
| vertical beamwidth-° | 55/45 |
| VSWR | ≤1.5 |
| Nominal Impedance-Ω | 50 |
| Polarization | Vertical |
| Max.Power-W | 50 |
| Connector | N female or customization |
| Dimension-mm | 210×180×44 |
| Weight-Kg | 0.72 |
| Mast Diameter-mm | φ40-50 |



800-2500MHz Antennas

Panel Antennas

Specifications

| | |
|------------------------|---------------------------|
| Model | HXWM-0825BKM2YB |
| Frequency Range-MHz | 800~960/1710~2500 |
| Gain-dBi | 7/10 |
| Horizontal Beamwidth-° | 70 |
| vertical beamwidth-° | 50 |
| VSWR | ≤1.5 |
| Nominal Impedance-Ω | 50 |
| Polarization | Vertical |
| Max.Power-W | 50 |
| Connector | N Female or customization |
| Dimension-mm | 210×180×44 |
| Weight-Kg | 1.2 |
| Mast Diameter-mm | φ40-50 |



Specifications

| | |
|------------------------|---------------------------|
| Model | HXWM-0825BKMLR2 |
| Frequency Range-MHz | 800~960/1710~2500 |
| Gain-dBi | 7/10 |
| Horizontal Beamwidth-° | 70/60 |
| vertical beamwidth-° | 55/45 |
| VSWR | ≤1.5 |
| Nominal Impedance-Ω | 50 |
| Polarization | Vertical |
| Max.Power-W | 50 |
| Connector | N female or customization |
| Dimension-mm | 210×180×44 |
| Weight-Kg | 0.72 |
| Mast Diameter-mm | φ40-50 |



800-2500MHz Antennas

Directional Ceiling Mount Antennas

Specifications

| | |
|------------------------|---------------------------|
| Model | HXCM-0825FSA |
| Frequency Range-MHz | 800~960/1710~2500 |
| Gain-dBi | 5/7 |
| Horizontal Beamwidth-° | 95/75 |
| vertical beamwidth-° | 100/70 |
| F/B Ratio-dB | 6/8 |
| VSWR | ≤1.5 |
| Nominal Impedance-Ω | 50 |
| Polarization | Vertical |
| Max.Power-W | 100 |
| Connector | N Female or customization |
| Dimension-mm | φ100×130 |
| Weight-Kg | 0.4 |
| Mounting way | Fixed with nut |



Specifications

| | |
|------------------------|---------------------------|
| Model | HXCM-0825XDA |
| Frequency Range-MHz | 806~960/1710~2500 |
| Gain-dBi | 5/7 |
| Horizontal Beamwidth-° | 95±15/75±15 |
| vertical beamwidth-° | 100/70 |
| F/B Ratio-dB | 6/8 |
| VSWR | ≤1.5 |
| Nominal Impedance-Ω | 50 |
| Polarization | Vertical |
| Max.Power-W | 100 |
| Connector | N female or customization |
| Dimension-mm | φ170×72 |
| Weight-Kg | 0.4 |
| Mounting way | Fixed with nut |



800-2500MHz Antennas

Directional Ceiling Mount Antennas

Specifications

| | |
|------------------------|---------------------------|
| Model | HXCM-0825XTQ |
| Frequency Range-MHz | 800~960/1710~2500 |
| Gain-dBi | 5.5 |
| Horizontal Beamwidth-° | ≈ 130/≈ 90 |
| vertical beamwidth-° | ≈ 70/≈ 80 |
| F/B Ratio-dB | 13.5/15 |
| VSWR | ≤ 1.5 |
| Nominal Impedance-Ω | 50 |
| Polarization | Vertical |
| Max.Power-W | 50 |
| Connector | N Female or customization |
| Dimension-mm | φ160×85 |
| Weight-g | 250 |
| Mounting way | Fixed with nut |



Specifications

| | |
|------------------------|---------------------------|
| Model | HXCM-0825XTQ1A |
| Frequency Range-MHz | 824~960/1710~2500 |
| Gain-dBi | 5.5 |
| Horizontal Beamwidth-° | 130/90 |
| vertical beamwidth-° | 70/80 |
| F/B Ratio-dB | 4/8 |
| VSWR | ≤ 1.5 |
| Nominal Impedance-Ω | 50 |
| Polarization | Vertical |
| Max.Power-W | 50 |
| Connector | N female or customization |
| Dimension-mm | φ160×110 |
| Weight-g | 300 |



800-2500MHz Antennas

Directional Ceiling Mount Antennas

Specifications

| | |
|------------------------|-------------------|
| Model | HXCM-0825XTZ |
| Frequency Range-MHz | 824~960/1710~2500 |
| Gain-dBi | 3/5 |
| Horizontal Beamwidth-° | 360/120 |
| vertical beamwidth-° | 120/120 |
| VSWR | ≤1.5 |
| Nominal Impedance-Ω | 50 |
| Polarization | Vertical |
| Max.Power-W | 50 |
| Connector | N Female |
| Dimension-mm | φ187×86 |
| Weight-Kg | 0.25 |
| Mounting way | Fixed with nut |



Specifications

| | |
|------------------------|-------------------|
| Model | HXCM-0825XYB |
| Frequency Range-MHz | 824~960/1710~2500 |
| Gain-dBi | 3/5 |
| Horizontal Beamwidth-° | 360/120 |
| vertical beamwidth-° | 120/120 |
| VSWR | ≤1.5 |
| Nominal Impedance-Ω | 50 |
| Polarization | Vertical |
| Max.Power-W | 50 |
| Connector | N female |
| Dimension-mm | φ187×88 |
| Weight-Kg | 0.25 |
| Mounting way | Fixed with nut |



800-2500MHz Antennas

Omni Ceiling Mount Antennas

Specifications

| | |
|------------------------|---------------------------|
| Model | HXCM-0825FSA |
| Frequency Range-MHz | 800~960/1710~2500 |
| Gain-dBi | 3/3.5 |
| Horizontal Beamwidth-° | 360 |
| VSWR | ≤1.5 |
| Nominal Impedance-Ω | 50 |
| Polarization | Vertical |
| Max.Power-W | 100 |
| Connector | N Female or customization |
| Dimension-mm | φ100×130 |
| Weight-Kg | 0.4 |
| Mounting way | Fixed with nut |



Specifications

| | |
|------------------------|---------------------------|
| Model | HXCM-0825XTSL |
| Frequency Range-MHz | 800~960/1710~2500 |
| Gain-dBi | 3 |
| Horizontal Beamwidth-° | 360 |
| vertical beamwidth-° | 55 |
| VSWR | ≤1.5 |
| Nominal Impedance-Ω | 50 |
| Polarization | Vertical |
| Max.Power-W | 100 |
| Connector | N female or customization |
| Dimension-mm | φ165×94 |
| Weight-Kg | 0.2 |
| Mounting way | Fixed with nut |



800-2500MHz Antennas

Omni Ceiling Mount Antennas

Specifications

| | |
|------------------------|-------------------|
| Model | HXCM-0825XTY |
| Frequency Range-MHz | 820~960/1710~2500 |
| Gain-dBi | 3 |
| Horizontal Beamwidth-° | 360 |
| VSWR | ≤1.5 |
| Nominal Impedance-Ω | 50 |
| Polarization | Vertical |
| Max.Power-W | 50 |
| Connector | N Female |
| Dimension-mm | φ160×85 |
| Weight-Kg | 0.25 |
| Mounting way | Fixed with nut |



Specifications

| | |
|------------------------|-------------------|
| Model | HXCM-0825XTY1 |
| Frequency Range-MHz | 800~960/1700~2500 |
| Gain-dBi | 3 |
| Horizontal Beamwidth-° | 360 |
| VSWR | ≤1.5 |
| Nominal Impedance-Ω | 50 |
| Polarization | Vertical |
| Max.Power-W | 50 |
| Connector | N female |
| Dimension-mm | φ160×85 |
| Weight-Kg | 0.25 |
| Mounting way | Fixed with nut |



800-2500MHz Antennas

Omni Ceiling Mount Antennas

Specifications

| | |
|------------------------|-------------------|
| Model | HXCM-0825XDB |
| Frequency Range-MHz | 824~960/1710~2500 |
| Gain-dBi | 3/5 |
| Horizontal Beamwidth-° | 360 |
| vertical beamwidth-° | 55/35 |
| VSWR | ≤1.5 |
| Nominal Impedance-Ω | 50 |
| Polarization | Vertical |
| Max.Power-W | 50 |
| Connector | N Female |
| Dimension-mm | φ187×88 |
| Weight-Kg | 0.62 |
| Mounting way | Fixed with nut |



Specifications

| | |
|------------------------|-------------------|
| Model | HXCM-0825XTL |
| Frequency Range-MHz | 806~960/1710~2500 |
| Gain-dBi | 2/4 |
| Horizontal Beamwidth-° | 360 |
| vertical beamwidth-° | 84/60 |
| VSWR | ≤1.8 |
| Nominal Impedance-Ω | 50 |
| Polarization | Vertical |
| Max.Power-W | 50 |
| Connector | N female |
| Dimension-mm | 160×135×5 |
| Weight-Kg | 0.2 |
| Mounting way | Fixed with nut |



800-2500MHz Antennas

Omni Ceiling Mount Antennas

Specifications

| | |
|------------------------|---------------------------|
| Model | HXCM-0825XTG3 |
| Frequency Range-MHz | 806~960/1710~2500 |
| Gain-dBi | 3 |
| Horizontal Beamwidth-° | 360 |
| vertical beamwidth-° | 55 |
| VSWR | ≤1.5 |
| Nominal Impedance-Ω | 50 |
| Polarization | Vertical |
| Max.Power-W | 50 |
| Connector | N Female or customization |
| Dimension-mm | φ180×90 |
| Weight-Kg | 0.25 |
| Mounting way | Fixed with nut |



Specifications

| | |
|------------------------|---------------------------|
| Model | HXCM-0825XTP |
| Frequency Range-MHz | 806~960/1710~2500 |
| Gain-dBi | 3 |
| Horizontal Beamwidth-° | 360 |
| vertical beamwidth-° | 55 |
| VSWR | ≤2.5 |
| Nominal Impedance-Ω | 50 |
| Polarization | Vertical |
| Max.Power-W | 50 |
| Connector | N female or customization |
| Dimension-mm | 108×99×11 |
| Weight-Kg | 0.2 |
| Mounting way | Fixed with screw |



800-2500MHz Antennas

Omni Ceiling Mount Antennas



Specifications

| | |
|------------------------|-------------------|
| Model | HXCM-0825XYB |
| Frequency Range-MHz | 824~960/1710~2500 |
| Gain-dBi | 3/5 |
| Horizontal Beamwidth-° | 360 |
| vertical beamwidth-° | 55/35 |
| VSWR | ≤1.5 |
| Nominal Impedance-Ω | 50 |
| Polarization | Vertical |
| Max.Power-W | 50 |
| Connector | N Female |
| Dimension-mm | φ187×88 |
| Weight-Kg | 0.25 |
| Mounting way | Fixed with nut |



Specifications

| | |
|------------------------|-------------------|
| Model | HXCM-0825XYD |
| Frequency Range-MHz | 800~960/1710~2500 |
| Gain-dBi | 3/5 |
| Horizontal Beamwidth-° | 360 |
| vertical beamwidth-° | 55/35 |
| VSWR | ≤1.5 |
| Nominal Impedance-Ω | 50 |
| Polarization | Vertical |
| Max.Power-W | 50 |
| Connector | N female |
| Dimension-mm | φ170×72 |
| Weight-Kg | 0.25 |
| Mounting way | Fixed with nut |



800-2500MHz Antennas

Omni Ceiling Mount Antennas

Specifications

| | |
|-----------------------------|---|
| Model | HXCM-0860XTYGA |
| Frequency Range-MHz | 806~960/1425~1700/ 1700~3100/3100~3450/ 5150~6000 |
| Gain-dBi | 2.5/3/3/3.5 |
| VSWR | $\leq 1.8/\leq 1.8/\leq 1.5/$ $\leq 2.5/\leq 2.0$ |
| Nominal Impedance- Ω | 50 |
| Polarization | Vertical |
| Max.Power-W | 100 |
| Connector | N Female or customization |
| Dimension-mm | $\varnothing 258 \times 95$ |
| Weight-Kg | 0.8 |
| Mounting way | Fixed with nut |



Specifications

| | |
|-----------------------------|---|
| Model | HXCM-0860YG |
| Frequency Range-MHz | 806~960/1425~1700/ 806~960/1425~1700/ 1700~3100/ 3100~3450/5150~6000 |
| Gain-dBi | 2.5/3/3/3.5 |
| VSWR | $\leq 1.5/\leq 1.8/\leq 1.5/$ $\leq 2.5/\leq 2.0$ |
| Nominal Impedance- Ω | 50 |
| Polarization | Vertical |
| Max.Power-W | 100 |
| Connector | N female |
| Dimension-mm | $\varnothing 94 \times 83$ (reflector $\varnothing 254$) |
| Weight-Kg | 0.2 |



800-2500MHz Antennas

Broadband Directional Antennas

Specifications

| | |
|------------------------|---|
| Model | HXDF-0825DSA |
| Frequency Range-MHz | 800~960/1710~2500 |
| Gain-dBi | 8.2/9.5 |
| Horizontal Beamwidth-° | 90/70 |
| vertical beamwidth-° | 60/55 |
| F/B Ratio-dB | ≥18 |
| VSWR | ≤1.5 |
| Nominal Impedance-Ω | 50 |
| Polarization | Vertical |
| Max.Power-W | 100 |
| Connector | N Female or customization |
| Dimension-mm | 293×210×65 |
| Weight-Kg | 0.83 |
| Wind Velocity-m/s | 60 |
| Mast Diameter-mm | φ40~50 |
| Note | When installing, you should let the side with a little hole face down to prevent the antenna radome from water. |



Specifications

| | |
|------------------------|---|
| Model | HXDF-0825DSAL |
| Frequency Range-MHz | 800~960/1710~2500 |
| Gain-dBi | 8.2/9.5 |
| Horizontal Beamwidth-° | 90/70 |
| vertical beamwidth-° | 60/55 |
| F/B Ratio-dB | ≥18 |
| VSWR | ≤1.5 |
| Nominal Impedance-Ω | 50 |
| Polarization | Vertical |
| Max.Power-W | 100 |
| Connector | N female or customization |
| Dimension-mm | 293×210×65 |
| Weight-Kg | 0.92 |
| Wind Velocity-m/s | 60 |
| Mast Diameter-mm | φ40~50 |
| Note | When installing, you should let the side with a little hole face down to prevent the antenna radome from water. |



800-2500MHz Antennas

Broadband Directional Antennas

Specifications

| | |
|------------------------|---|
| Model | HXDF-0825DSB |
| Frequency Range-MHz | 800~960/1710~2500 |
| Gain-dBi | 5.5/6.5 |
| Horizontal Beamwidth-° | 90/70 |
| vertical beamwidth-° | 60/55 |
| VSWR | ≤1.5 |
| Nominal Impedance-Ω | 50 |
| Polarization | Vertical |
| Max.Power-W | 100 |
| Connector | N Female or customization |
| Dimension-mm | 588×210×65 |
| Weight-Kg | 1.35 |
| Wind Velocity-m/s | 60 |
| Mast Diameter-mm | φ40~50 |
| Note | When installing, you should let the side with a little hole face down to prevent the antenna radome from water. |



Specifications

| | |
|------------------------|---|
| Model | HXDF-0825DSFL |
| Frequency Range-MHz | 800~960/1710~2500 |
| Gain-dBi | 9.5±1/10±1 |
| Horizontal Beamwidth-° | 75±12/65±12 |
| vertical beamwidth-° | 55/50 |
| F/B Ratio-dB | ≥16/≥18 |
| VSWR | ≤1.5 |
| Nominal Impedance-Ω | 50 |
| Polarization | Vertical |
| Max.Power-W | 50 |
| Connector | N female or customization |
| Dimension-mm | 442×205×37 |
| Weight-Kg | 1 |
| Wind Velocity-m/s | 60 |
| Mast Diameter-mm | φ40~50 |
| Note | When installing, you should let the side with a little hole face down to prevent the antenna radome from water. |



700-2700MHz Antennas

Directional Antennas

Specifications

| | |
|------------------------|---------------------------|
| Model | HXDF-0727BKML |
| Frequency Range-MHz | 698~960/1700~2700 |
| Gain-dBi | 7/10 |
| Horizontal Beamwidth-° | 70/60 |
| vertical beamwidth-° | 55/45 |
| VSWR | $\leq 2/\leq 1.5$ |
| Nominal Impedance-Ω | 50 |
| Polarization | Vertical |
| Max.Power-W | 50 |
| Connector | N Female or customization |
| Dimension-mm | 210×180×44 |
| Weight-Kg | 0.4 |
| Mounting way | Wall Mounting |



Specifications

| | |
|------------------------|---|
| Model | HXDF-0727DSAL |
| Frequency Range-MHz | 700~800/800~960/ 1710~2700 |
| Gain-dBi | 7.9/8.2/9.5 |
| Horizontal Beamwidth-° | 90/90/70 |
| vertical beamwidth-° | 60/60/55 |
| F/B Ratio-dB | ≥ 18 |
| VSWR | $\leq 2/\leq 1.5$ |
| Nominal Impedance-Ω | 50 |
| Polarization | Vertical |
| Max.Power-W | 100 |
| Connector | N female or customization |
| Dimension-mm | 293×210×65 |
| Weight-Kg | 0.92 |
| Wind Velocity-m/s | 60 |
| Mast Diameter-mm | φ40~50 |
| Note | When installing, you should let the side with a little hole face down to prevent the antenna radome from water. |



800-2500MHz Antennas

Broadband Directional Antennas

Specifications

| | |
|------------------------|---|
| Model | HXDF-0727DSL |
| Frequency Range-MHz | 790~960/1710~2700 |
| Gain-dBi | 6/7 |
| Horizontal Beamwidth-° | 85/60 |
| vertical beamwidth-° | 60/50 |
| VSWR | ≤1.7 |
| Nominal Impedance-Ω | 50 |
| Polarization | Vertical |
| Max.Power-W | 50 |
| Connector | N Female or customization |
| Dimension-mm | 588×210×65 |
| Weight-Kg | 1.35 |
| Wind Velocity-m/s | 60 |
| Mast Diameter-mm | φ40~50 |
| Note | When installing, you should let the side with a little hole face down to prevent the antenna radome from water. |



Specifications

| | |
|------------------------|---|
| Model | HXDF-0727XDA |
| Frequency Range-MHz | 698~960/1710~2700 |
| Gain-dBi | 5/7 |
| Horizontal Beamwidth-° | 95±15/75±15 |
| vertical beamwidth-° | 100/70 |
| F/B Ratio-dB | 5/7 |
| VSWR | 698~806/806~960: ≤2.0 1710~2500: ≤1.5 2500~2700: ≤2.0 |
| Nominal Impedance-Ω | 1710~2500: ≤1.5 |
| Polarization | Vertical |
| Max.Power-W | 100 |
| Connector | N female or customization |
| Dimension-mm | φ170×72 |
| Weight-Kg | 0.4 |
| Mounting Way | Fix with nut |



700-2700MHz Antennas

Omni Antennas

Specifications

| | |
|---------------------|---------------------------|
| Model | HXOA-0727FSA |
| Frequency Range-MHz | 698~896/1700~2700 |
| Gain-dBi | 3/3.5 |
| VSWR | ≤1.5 |
| Nominal Impedance-Ω | 50 |
| Polarization | Vertical |
| Max.Power-W | 50 |
| Connector | N Female or customization |
| Dimension-mm | φ100×130 |
| Weight-Kg | 0.29 |
| Mounting way | Fix with nut |



Specifications

| | |
|---------------------|---|
| Model | HXOA-0727XDA |
| Frequency Range-MHz | 698~960/1710~2700 |
| Gain-dBi | 2/5 |
| VSWR | 698-806: ≤2.5 806-960/1710-2500: ≤1.5 2500-2700: ≤2.0 |
| Nominal Impedance-Ω | 50 |
| Polarization | Vertical |
| Max.Power-W | 100 |
| Connector | N female or customization |
| Dimension-mm | φ170×72 |
| Weight-Kg | 0.4 |
| Mounting Way | Fix with nut |





SEISEN, S.L.

C/ Rafael Pillado Mourelle, 30 - 28110 Algete (Madrid) Spain T:+34 916 287 520 F:+34 916 287 523 - www.seisen.es

